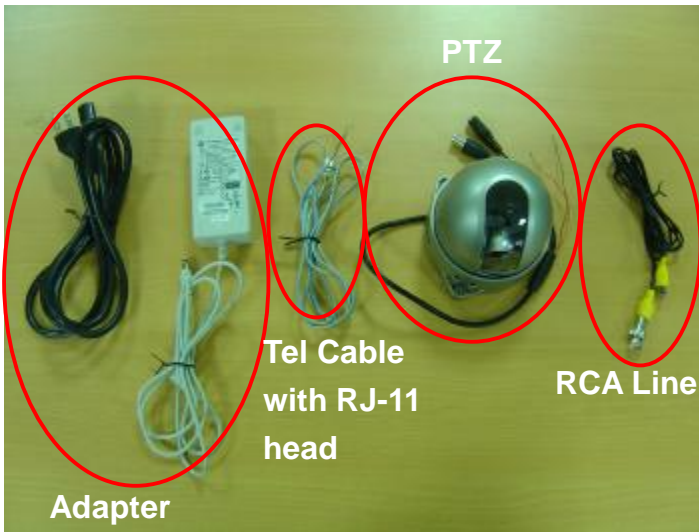


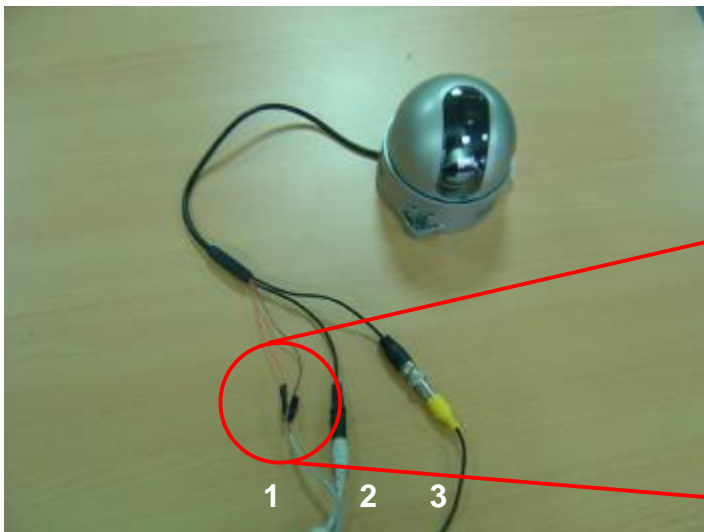
# CPcam PTZ Installation

## Connecting PTZ via RS-485 port

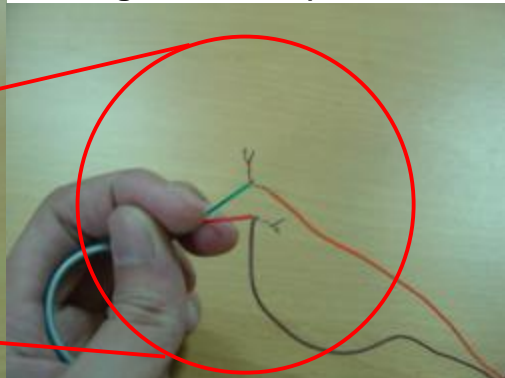
Device :



Connect : 1.PTZ control 2.Power 3.Video

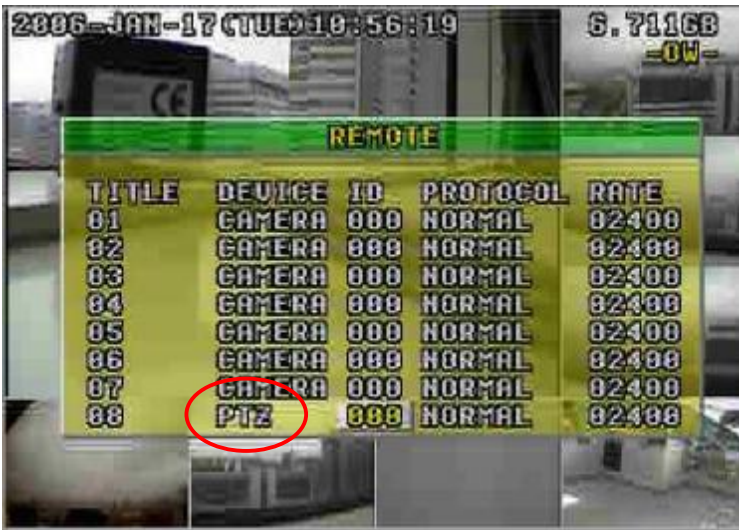


**Brown to Red (RS485-A or RS485+)**  
**Orange to Green (RS485-B or RS485-)**



PS: You could switch the wire connection in opposite way if it is not working as the connection in the picture. The telephone cable may have wire jumping.

Setup : After connecting all devices, DVR remote setting as follow.



Enter ID setting : If connecting is success, DVR will detect PTZ ID number.



Switch to PTZ mode, and begin to control PTZ.

