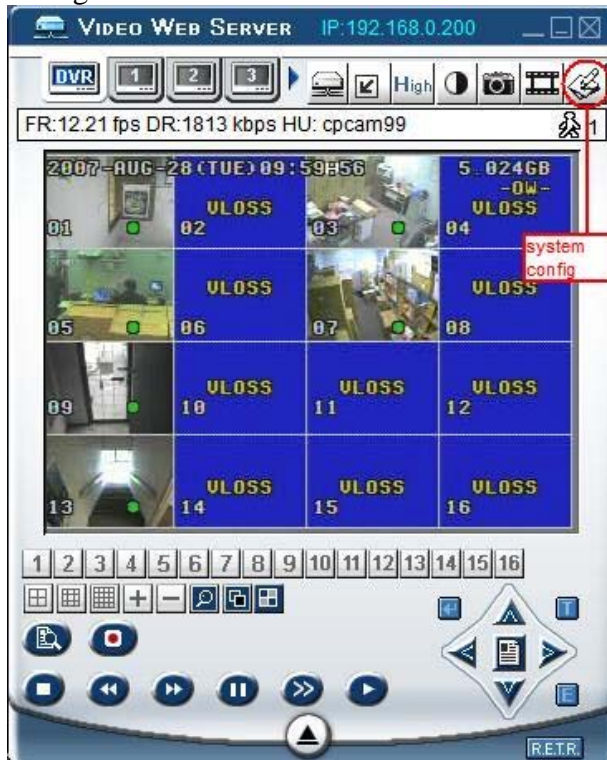
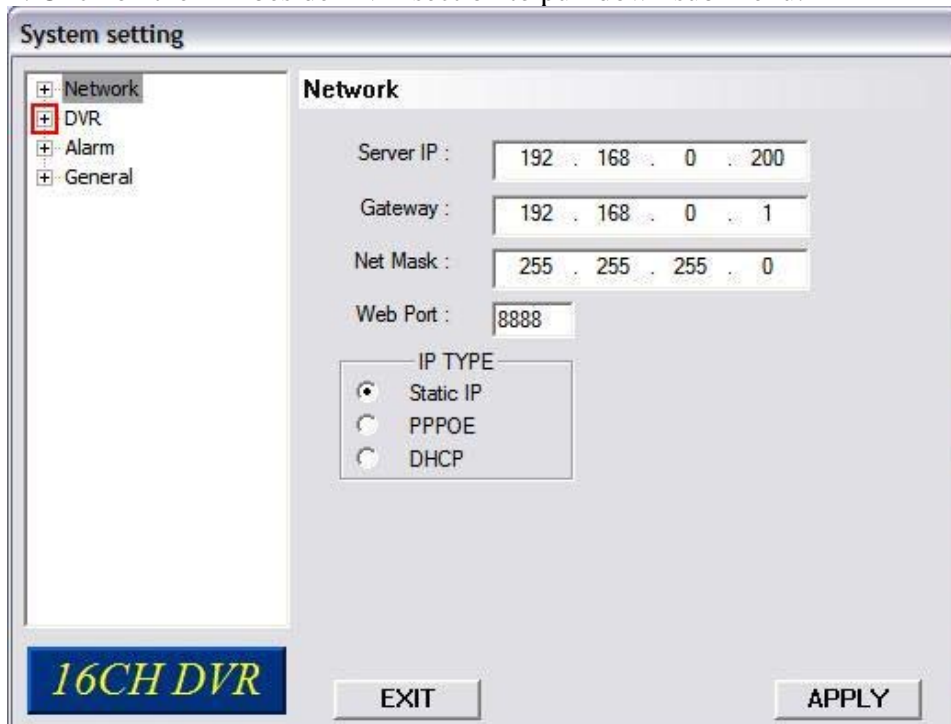


## CPCAM MPEG4 DVR – NETWORK BACKUP

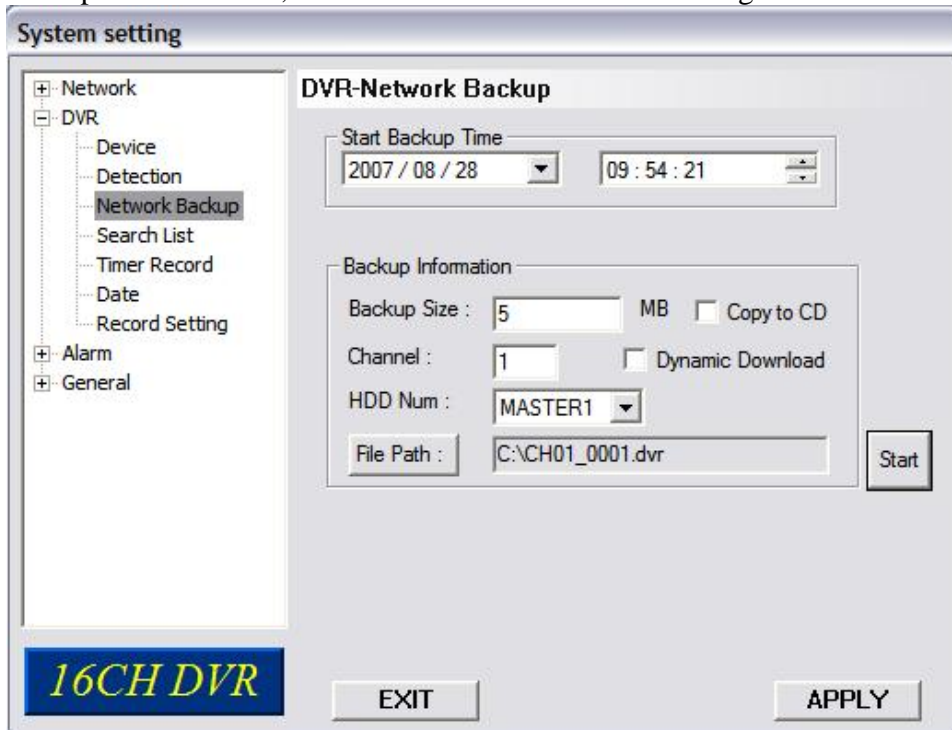
1. Login DVR via Video Server E software and click on “system config”.



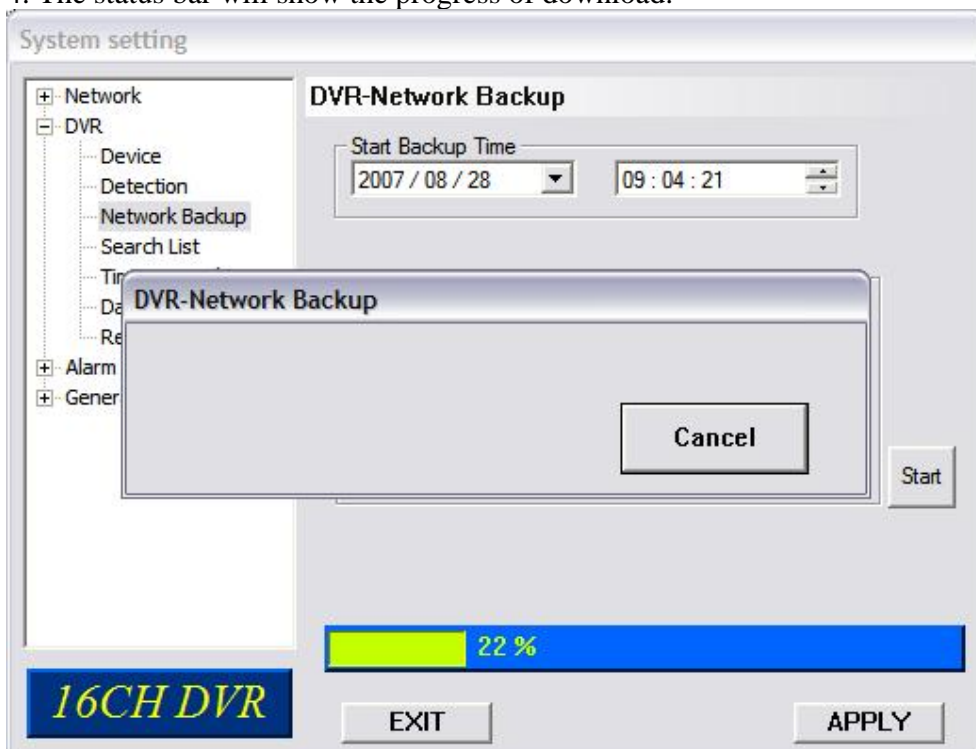
2. Click on the “+” beside DVR section to pull down sub-menu.



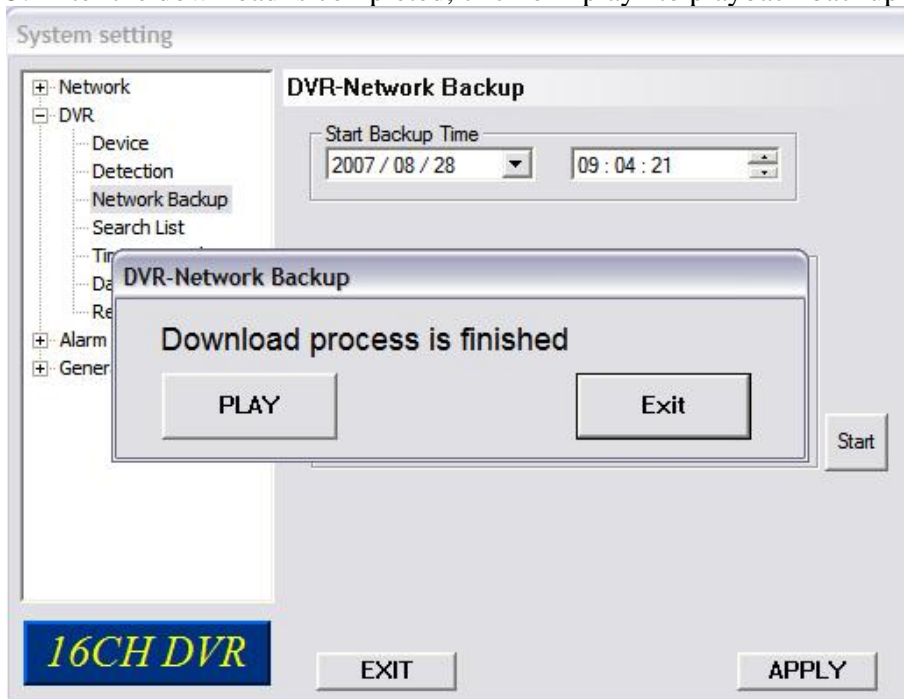
3. Click on “Network Backup” and type in the starting time, backup video size and, backup channel. Then, click on “Start” to start downloading video files.



4. The status bar will show the progress of download.



5. After the download is completed, click on “play” to playback backup file.



6. Now the backup file is stored on your DVR. You could always open it with our own player.

