

# NETWORK SETUP

## ◆ GLOSSARY

### **Static IP**     *Static IP*

Computers are communicated and recognized by their own unique IP addresses over the Internet. “Static IP” provided by your ISP (Internet Service Provider) means the IP address of the computer is fixed, and is suitable to build a website.

### **PPPoE**     *Point-to-Point Protocol over Ethernet*

Users can easily have high-speed Internet services as long as they’re ready for the following things:

- 1) Insert an Ethernet card into the PC.
  - 2) Obtain ADSL service via any ISP.
  - 3) Obtain and install PPPoE software CD.
- The charge varies depending on each ISP.

### **DHCP**     *Dynamic Host Configuration Protocol*

The main function is to enable a machine to connect to a DHCP server via its Ethernet address to acquire IP address, net mask, default gateway and DNS information.

After finish the settings for DHCP servers, the administrator can get IP-related settings automatically via the DHCP protocol in the local PC and do not need to set the settings in each PC.

### **DDNS**     *Dynamic Domain Name Server*



Each machine is recognized by its own unique IP address. When a user enters a domain name, the browser will connect to a host which contains the corresponding information of domain names and IP addresses to look for the IP address of the target PC. This host is the so-called Domain Name Server, DNS. DDNS, Dynamic Domain Name Server, will help to set the corresponding domain name for the host with the dynamic IP address when the IP address changes. The operation of DDNS is as follows: download and install the client software in your host. Then, the client software will communicate with the Dynamic DNS server, and determine the corresponding domain name with the changes of the IP address.

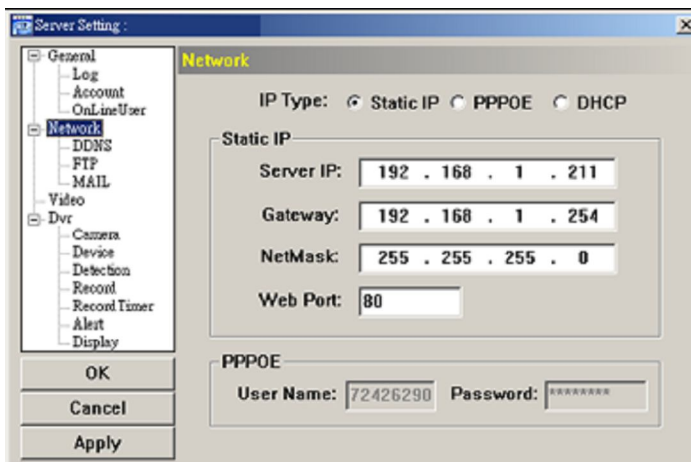
### ◆ **Operation Instructions**

Please build an area network by connecting your DVR and your PC/NB with a network cable. Then, log in your DVR with the supplied AP software for the following settings.

**NOTE: Your NB/PC and DVR must be under the same domain to build an area network. Please change the IP address of your PC/NB into 192.168.1.XX can be the number between 1~255, except 10) for login. The default IP address for your DVR is 192.168.1.10, and the default account/password are admin/admin.**

### ◆ **Network**

Click”  (Miscellaneous Control)” and choose  (DVR Setting). In “Network” and its sub-menu, “DDNS”, you can set the DVR network configuration. The network configuration allows the DVR to connect to the LAN or Internet.



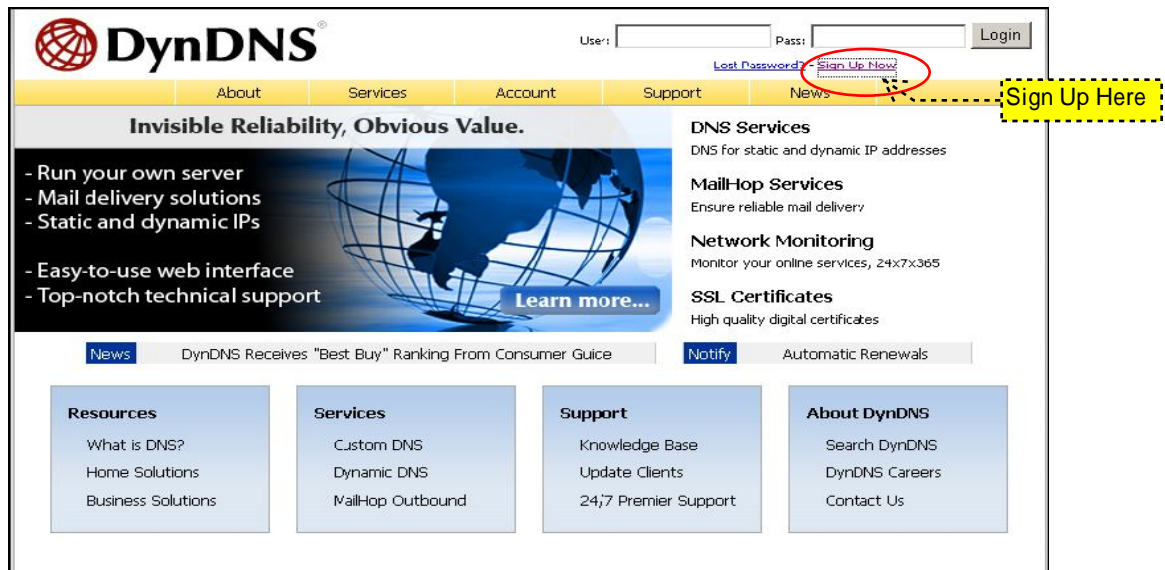
Select the network type you will be using for DVR connection. There are 3 network connection types: Static IP, PPPOE and DHCP.

**Note: PPPOE and DHCP network connection types are required to apply the DDNS service to get a “Hostname” to correspond to a dynamic IP address. Please refer to “DDNS” at page 3 for details.**

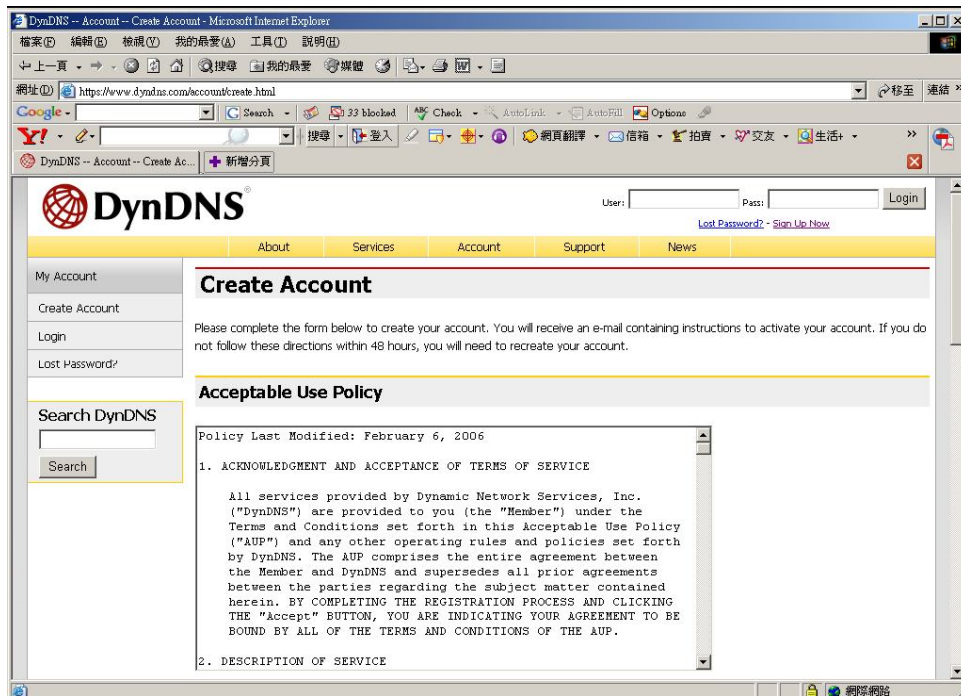
## ◆ DDNS

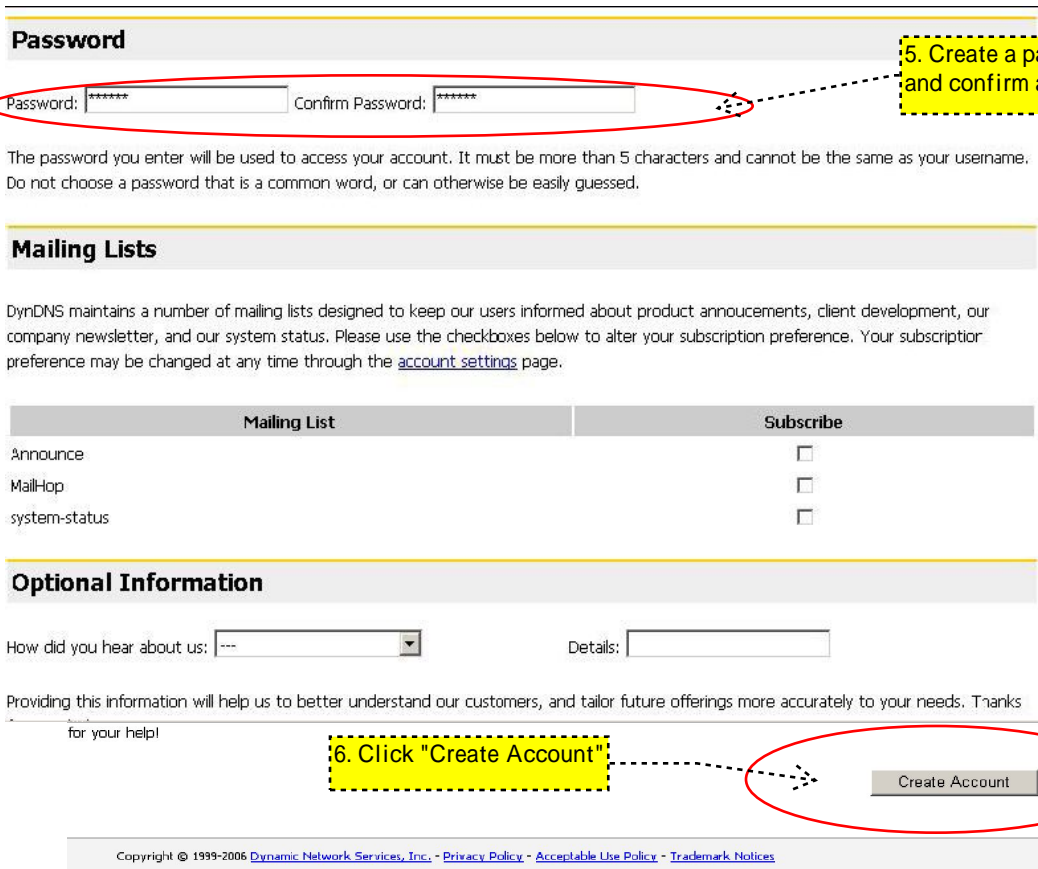
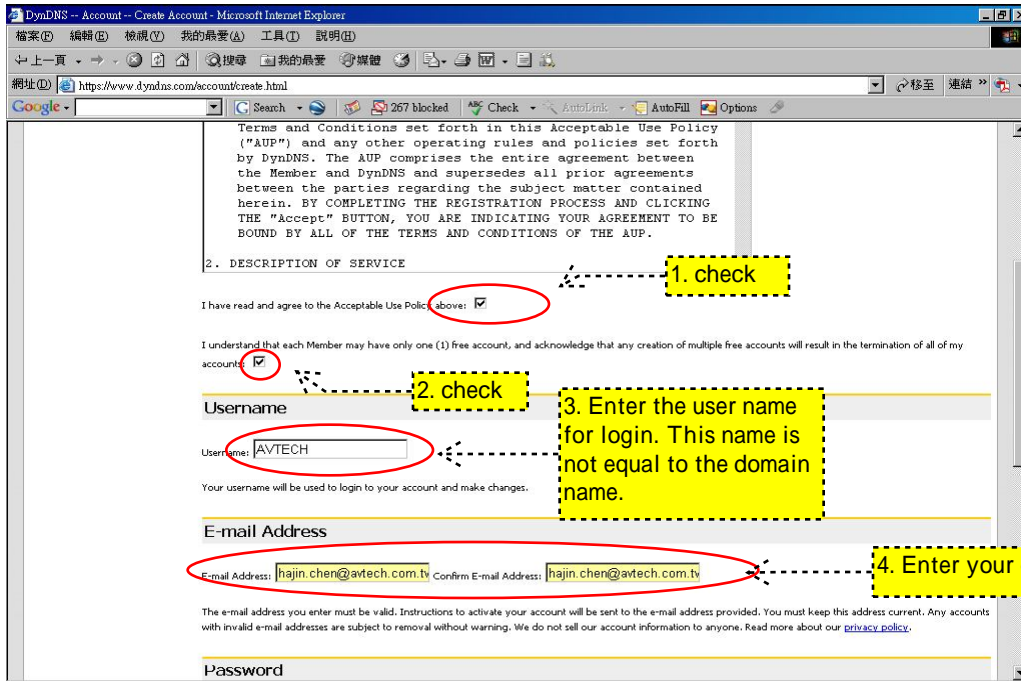
You need to apply a DDNS account before setting PPPoE or DHCP connection. This will help to associate the domain name you applied with the corresponding IP address and prevent connection failure because of the usage of the dynamic IP address. For DDNS setup, please refer to the steps below.

1. Go to <http://www.dyndns.com> and sign up a DDNS account.

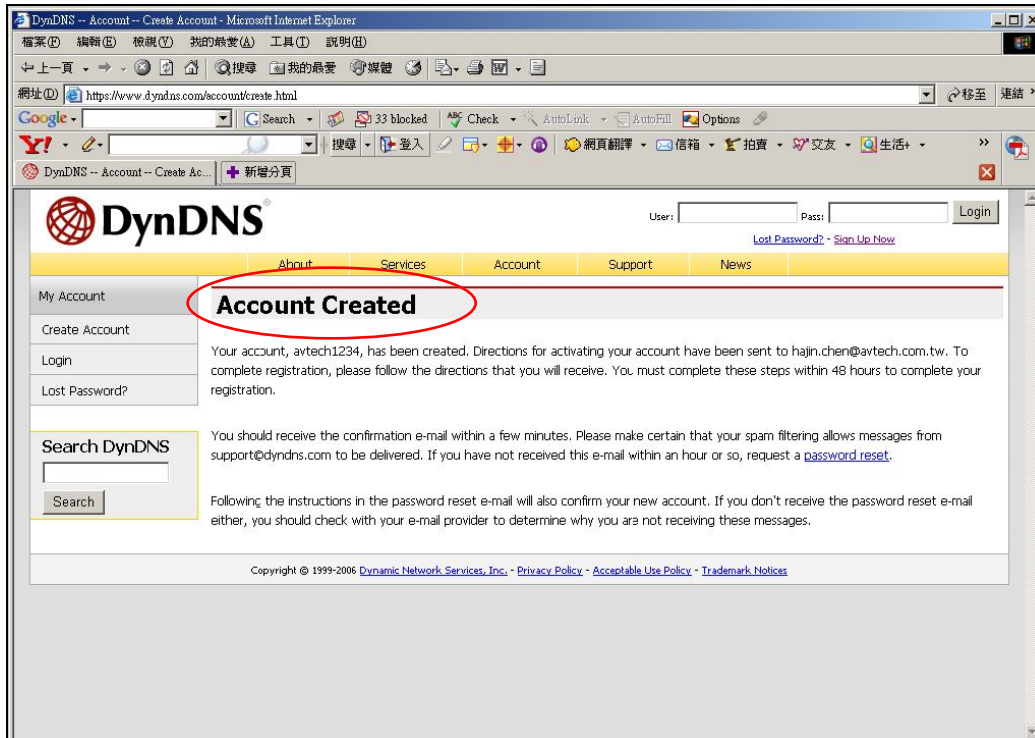


2. Enter all the information necessary for signing up an account according to the website instructions.

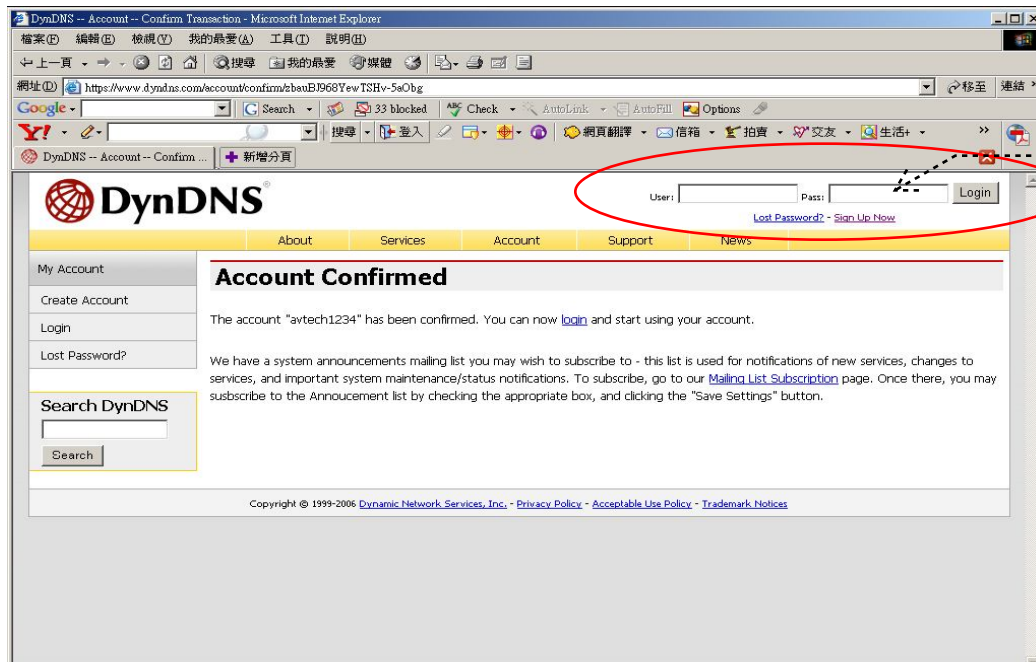




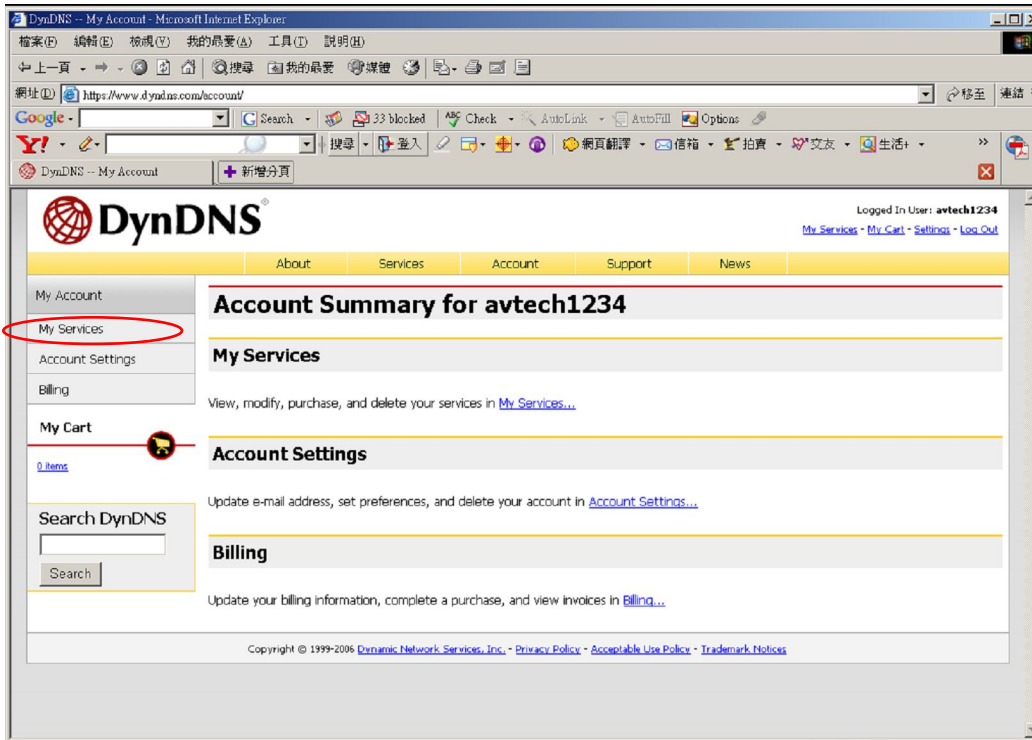
- Then, you will see the screen “Account Created”, and DynDNS will email the instructions to your specified E-mail address for enabling your account. Please get this mail within 48 hours and complete the procedure for enabling your account according to the instructions in the mail.



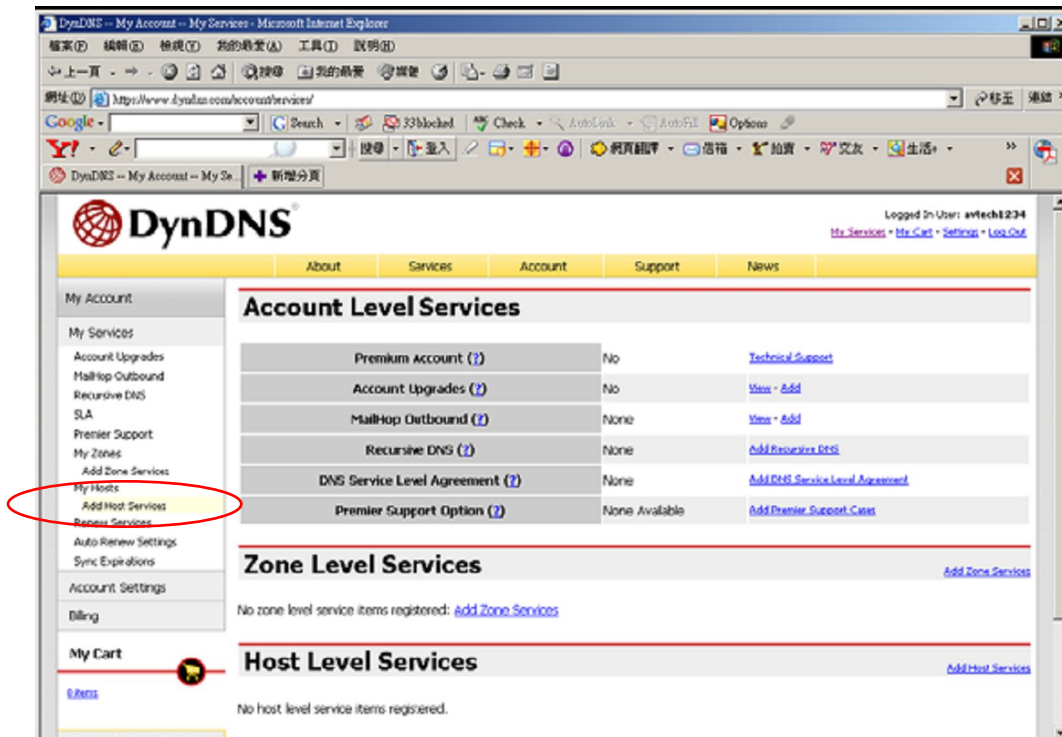
- Press the link in the mail and you will see “Account Confirmed”. Your account is created successfully now. Log in with your account information.



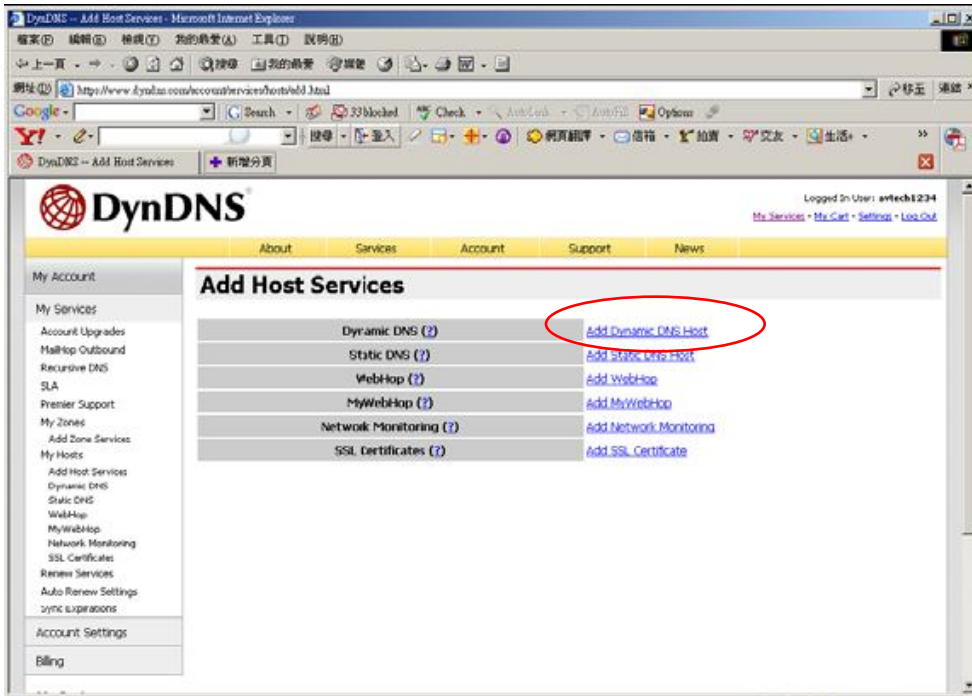
5. Click "My Service"



6. Click "Add Host Services"



7. Click "Add Dynamic DNS Host".



8. Fill in and choose the desired host name.

1. Enter a meaningful name.

2. Choose a name.

### New Dynamic DNS<sup>SM</sup> Host

Hostname:	<input type="text" value="yourname"/>	<input type="text" value="mine.nu"/>
IP Address:	<input type="text" value="211.75.84.96"/>	
Enable Wildcard:	<input type="checkbox"/>	
Mail Exchanger (optional):	<input type="text"/>	<input type="checkbox"/> Backup MX?

3. Click "Add Host"

9. The host name is created. You will be connected to the corresponding IP address whenever you enter this hostname.

## Hostname Created

[Dynamic DNS Host](#)

The hostname you have requested has been created. The information now in the database and DNS system is:

Hostname:	<a href="#">yourname.mine.nu</a>
IP Address:	211.75.84.96
Wildcard:	N
Mail Exchanger:	None
Backup MX:	N

10. After login, click “Account” → “My Service” → “Add Host Services” → “Add Dynamic DNS Host”. Enter and choose a host name, and click “Add Host”. Then, your DDNS host name is created.

