

9 CH Digital Video System

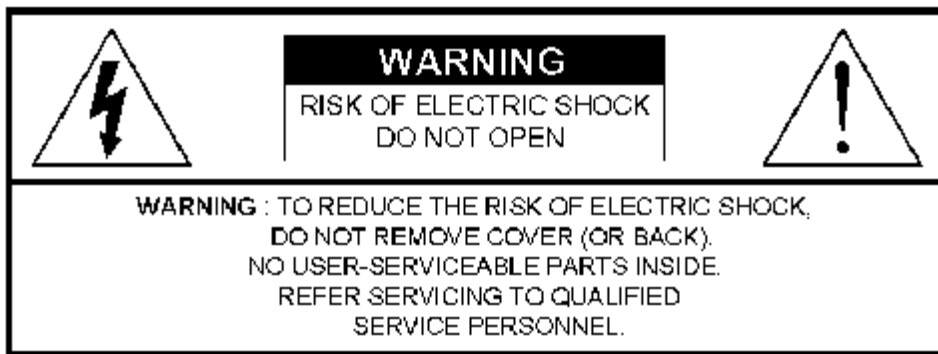


USER'S MANUAL

Please read this instructions thoroughly before operation and retain it for future reference.

WARNING

All the safety and operating instructions should be read before operation. The improper operation may cause permanent damage.



- Please use the provided adaptor (Other adaptor is not suitable for this machine).
- Please lift and place this equipment gently.
- Do not expose this equipment to open sunlight.
- Do not use this equipment near water or in contact with water.
- Do not spill liquid of any kind on the equipment.
- Please power down the unit before unplugging.
- Do not switch the Power On & Off within short period of time (within 3 seconds).
- Do not attempt to have this equipment serviced by yourself.
- Installation should be made by qualified service personnel.



The lightning flash with arrowhead symbol, within an equilateral triangle, is intended to alert the user to the presence of uninsulated "dangerous voltage" within the product's enclosure that may be of sufficient magnitude to constitute a risk of electric shock to persons.



The exclamation point within an equilateral triangle is intended to alert the user to the presence of important operating and maintenance-(servicing) instructions in the literature accompanying the appliance.

TABLE OF CONTENTS

What do you get ?

- FEATURES ----- 1
- PACKAGE INCLUDING ----- 1

Before Operation

- INSTALLATION GUIDE ----- 2
- FRONT PANEL ----- 3
- REAR PANEL ----- 5

Basic Operation

- GETTING STARTED----- 6
- OPERATION----- 6

Detailed Menu Setup

- ACCESS MENU ----- 8
- MAIN MENU ----- 8
- MENU OPTIONS ----- 9
- MOTION DETECTION ----- 13

Network Setting Guide

- HARDWARE CONNECTION ----- 16
- STATIC IP SETTING ----- 17
- DYNAMIC IP SETTING ----- 21
- SOFTWARE OPERATION ----- 33
- BASIC SOFTWARE OPERATION ----- 34
- PLAYBACK OPERATION----- 36
- ADVANCED SETTING----- 37
- CONNECT VIA IE BROWSER ----- 40

TABLE OF CONTENTS

Advanced Operation

• OPERATION OPTIONS	42
• KEY LOCK	43
• TROUBLE SHOOTING	43
• SPECIFICATIONS	44
APPENDIX #1 – INSTALLING THE HDD	45
APPENDIX #2 –RACK MOUNT	47
APPENDIX #3 – RECORDING SPEED	48
APPENDIX #4 – PIN CONFIGURATIONS	49

What do you get ?

FEATURES

DVS Features

- Remote control via the internet
- Wavelet Compression Format replaces Time-Lapse VCR + Multiplexer
- 4 Audio inputs / 2 Audio outputs
- On Screen Display and RTC (Real time clock) Function
- Support 9 channels video inputs
- Picture-In-Picture (PIP) is available in live and DVS playback modes
- Motion detection function and 4 Level video quality adjustable on each channel
- Alarm Input & Output Function
- Video loss detected on each channel can record 160 events
- Power-loss memory function
- Support 1 Removable HDDs, IDE Type
- Quick Multiple Search by date/time, alarm, full list
- Security password protection

PACKAGE CONTENT



Digital Video System (with HDD cartridge)



User's Manual



Accessories pack



2 Keys



Power Adapter and Cord

NOTE : Please check the package to make sure that you receive the complete accessories including the components shown above.

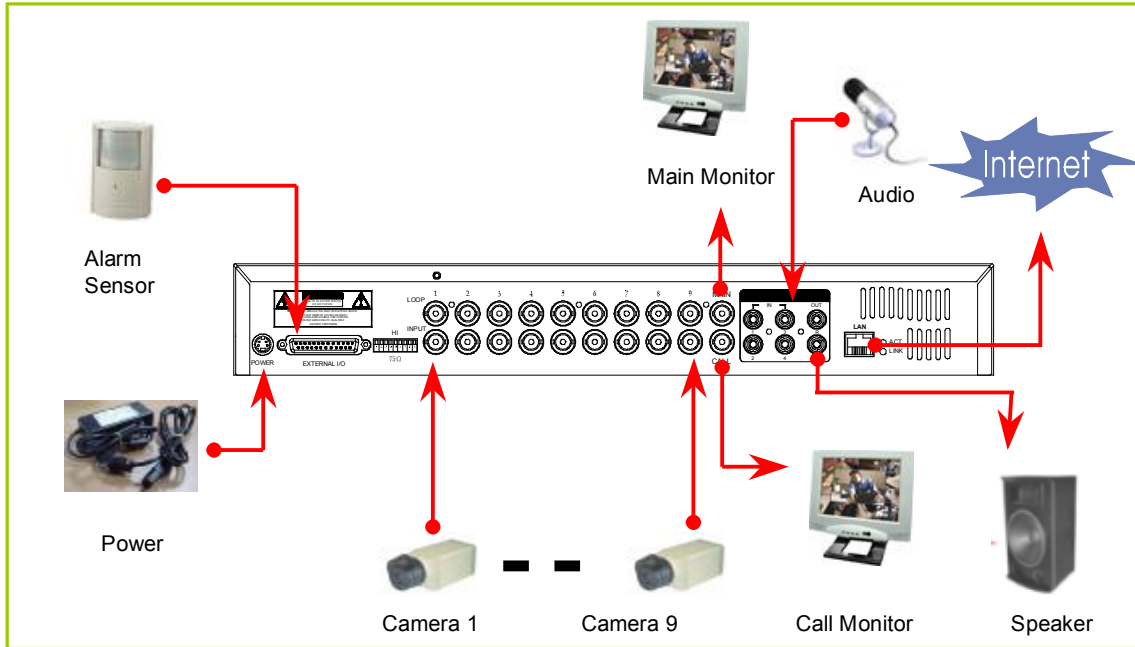
Before Operation

INSTALLATION GUIDE

1. Connect cameras and monitor with the DVS.
2. Shown below is one example for connecting the DVS to your existing Observation System.
3. Install HDDs (The compatible HDD Brands are listed in the following table.)

Please refer to page.45 Appendix #1 for installation instructions.

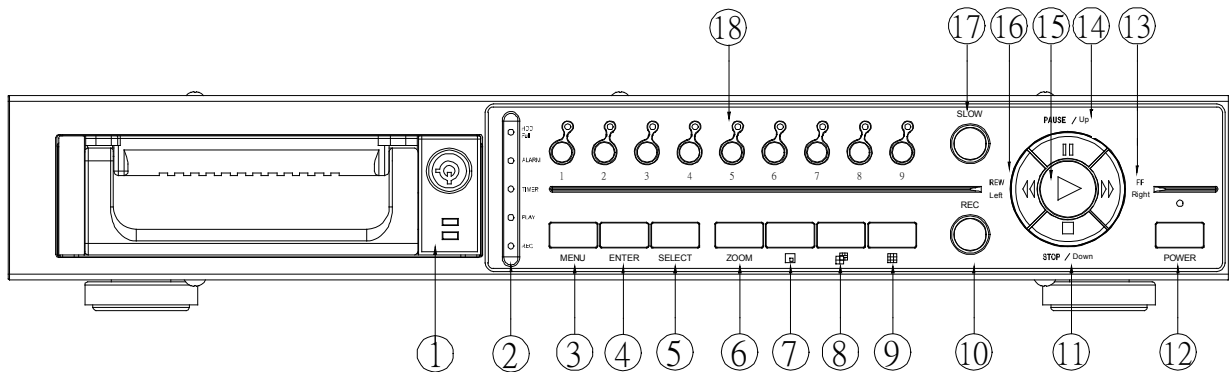
The HDDs must be installed before turning on the DVS.



COMPATIBLE HARD DISK BRANDS

Manufacturer	Model	Capacity	Rotation
HITACHI	Deskstar 180 GXP (120 GB)	120GB	7200 rpm
HITACHI	Deskstar 7K250, HDS722516VLAT20	160GB	7200rpm
HITACHI	Deskstar 7K250, HDS722525VLAT80	250GB	7200rpm
IBM	Deskstar 120GXP (80GB)	80GB	7200 rpm
IBM	Deskstar 120GXP (120GB)	120GB	7200 rpm
Maxtor	DiamondMax 536DX(60GB) 4W060H4	60GB	5400rpm
Maxtor	DiamondMax Plus 9	80GB	7200 rpm
Maxtor	DiamondMax Plus 9, Model#6Y120L	120GB	7200 rpm
Maxtor	DiamondMax Plus 9, Model#6Y160L0	160GB	7200rpm
Maxtor	MaxLine Plus II , Model#7Y250P0	250GB	7200rpm
Seagate	Barracuda ATA IV, ST380021A	80GB	7200rpm
Seagate	Barracuda ATA V, ST3120023A	120GB	7200 rpm
Seagate	Barracuda 7200.7 Plus, ST3160023A	160GB	7200 rpm
Western Digital	Caviar WD1200BB-00CAA1	120GB	7200rpm
Western Digital	Caviar WD2000BB-00DWA0	200GB	7200rpm
Western Digital	CaviarSE WD2500JB	250GB	7200rpm

FRONT PANEL



1. REMOVABLE HDD CARTRIDGE

Please refer to page.45 Appendix #1.

2. LED LIGHT

The LED Light is ON under following condition.

- HDD : HDD is activated
- HDD Full : HDD is full
- ALARM : If you want to turn off the ALARM LED light, please refer to page.12 and set the Camera / ALARM item as OFF. (all of the cameras should be set as OFF.)
- TIMER : When Timer is set as Enabled
- PLAY : On Play mode
- REC : On Recording mode

3. MENU

Press MENU to enter main menu.

4. ENTER

Press ENTER for confirmation.

5. SELECT

Press the Select to select appointed camera (1~9) to display on full screen mode.

6. ZOOM

Press ZOOM to enlarge the picture display.



Press PIP button for Picture in Picture screen.



4 and 7 channels display mode



9 channels display mode

10. REC

Press **REC** to start recording.

11. STOP / DOWN

- **STOP** : Under DVS Record / Play mode, it can stop the moment action.
- **DOWN** : Under setup mode, it works as Down button.

12. POWER

Press Power to turn ON / OFF the DVS.

13. FF / Right

- **FF** : It can play video forward at high speed.
(Press FF again to adjust speed from 1, 2, 4, 8, 16, 32 times)
- **Right** : Under setup mode, it can work as Right button.

14. PAUSE / UP

- **Pause** : Under DVS play mode, it can pause the action.
- **UP** : Under setup mode, it works as Up button.

15. PLAY

Press **PLAY** to play recorded video.

16. REW / LEFT

- **REW** : Under DVS play mode, it can play video backward at different speeds.
(Press REW again to adjust speed as 1, 2, 4, 8, 16, 32 times)
- **Left** : Under setup mode, it works as Left button.

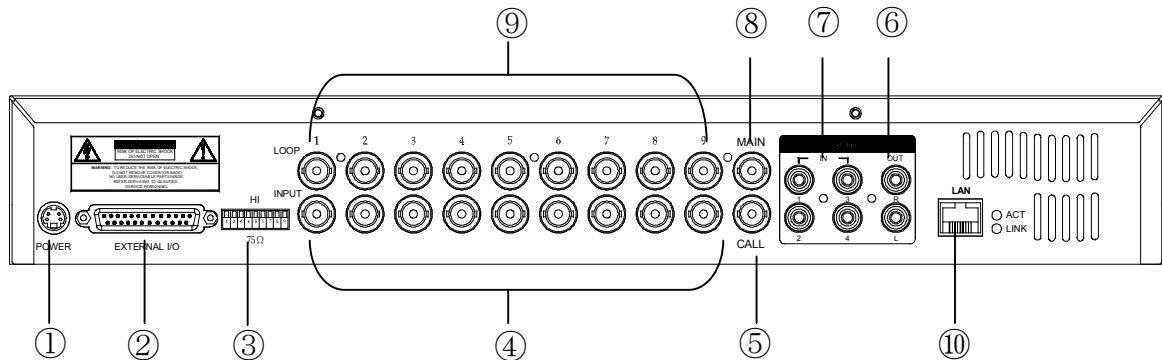
17. SLOW

To slow down speed of play mode.

18. CAMERA (1-9)

Press the Camera Select (1-9) to select specified camera.

REAR PANEL



1. POWER

Please use the provided adaptor to connect power cord (Other adaptor is not suitable for this machine).

2. EXTERNAL I/O

- Controlled remotely by an external device or control system.
- Alarm input, external I / O explanation.

3. 75Ω / HI

When using Loop function, please switch to HI. If you don't use Loop function or disconnect the video input, please set it as 75Ω.

4. VIDEO INPUT (1-9)

Connect to video source, such as camera.

5. CALL

Connect to CALL monitor. Show the Switch Display. When alarm trigger happens, the call monitor will show the triggered channel for a period of time.

6. AUDIO OUT (R/L)

Connect to monitor or speaker.

- IPS should be set to 25A (for NTSC) or 18A (for PAL)
- * with 2 mono audio outputs from the same source.**

7. AUDIO IN (1-4)

Connect to audio source, such as microphone.

- IPS should be set to 25A (for NTSC) or 18A (for PAL)
- * 4 audio inputs, but only can select 1 during recording.**

8. MAIN

Connect to Main monitor

9. LOOP (1-9)

Connect video signal between Input port and Loop port to make a loop.

10. LAN

Connect DVS by network.

Basic Operation

GETTING STARTED

Before using the DVS, please have the HDDs installed ready. (refer to Appendix #1 for installation or removal of HDDs).

1. Connect the AC Power Cord with Power Adapter and plug into an electrical outlet. The Red LED indicator light will be ON and the DVS is in Standby mode.
2. Press the Power button. The POWER LED will turn from red to orange, and other red LED indicators will be turn ON. It takes approximately 5 to 15 seconds to boot the system with the message : " HDD Detecting ". Once being connected, the POWER LED will change to green color, and the Alarm LED will be ON.
3. Before operating the DVS, please set up the system time first. (for setting system time, please refer to page.11).

NOTE : When "HDD not found" message shows up, please refer to appendix # 1. Because the HDD is probably not installed correctly.

OPERATION

RECORDING

The DVS offers a variety of recording modes, such as record continuously, at scheduled time, and by events. You can set up recording speed and resolution. You can set these options by selecting MENU / RECORD before recording, please refer to page.12. Under the recording status, if power is off accidentally, recorded video will still be saved in the HDDs. DVS will return to original recording situation after power returns again.

On the screen, you will find the date, time, HDD recording type and the letter "M" represents the method of recording that is occurring.(OW : HDD Overwrite)

2002 - JAN -01 01:02:03
M ● OW

NOTE : 1. When the HDDs are full under O/W Recording mode, previous recorded files may be overwritten without further warning notices.

2. If the HDDs' capacity only has 5 GB left, it will buzz for 3 seconds; so as in 4GB, 3GB, 2GB and 1GB. If the O/W Recording mode(NOTE 1) is on, it won't have the warning buzzer.

There are 4 recording modes in which Recording can occur : Alarm, Timer, Manual and Motion Trigger Record.

1. ALARM RECORD

DVS is triggered by an alarm input. Indicated by the letter "A" and show  diagram on the triggered channel.


2. TIMER RECORD

Recording is scheduled by a Timer. Indicated by the letter "T".

3. MANUAL RECORD

Recording is initiated by manually pressing the REC button. Indicated by the letter "M".

4. MOTION TRIGGER RECORD

Recording is triggered by motion detection. Indicated by the letter "D" and show  diagram on the triggered channel.

PLAY

Press "PLAY" button, the DVS will show the last recording.

1. FAST FORWARD (F.F.) & FAST REWIND (F.R.)

You can increase the speeds of Fast Forward and Rewind on the DVS.

In the Play mode, press "▶▶" once to get 1X speed forward and press twice to get 2X speed,... and the maximum speed can reach 32X.

Press "◀◀" once to get 1X speed rewind and press twice to get 2X speed, ... and the maximum speed can reach 32X.

2. SLOW FORWARD (S.F.) & SLOW REWIND (S.R.)

You can also slow down the speeds of Forward and Rewind on the DVS.

In the Play mode, press the SLOW button and you will enter Slow mode.

Press "▶▶" once to get 1/2X speed forward and press twice to get 1/4X speed,... and the slowest speed can reach 1/32X.

Press "◀◀" once to get 1/2X speed rewind and press twice to get 1/4X speed, ... and the slowest speed can reach 1/32X.

3. PAUSE

It will let you pause the current image displayed on the screen.

4. STOP

Press "STOP" under any circumstance, it will return DVS to live monitoring mode.

5. IMAGE JOG DIAL

It will allow you to manually view video frame-by-frame, one image at a time.

While in PLAY mode, press "PAUSE", it will pause the screen.

Press "▶▶" button to advance the frozen screen one image forward.

Press "◀◀" button to move back one image.

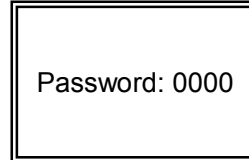
CAMERA SELECT (1-9)

Press Camera Select (1-9) to select appointed camera to display on full screen mode.

Detailed Menu Setup

ACCESS MENU

The Menu allows you to configure your DVS settings. Please follow the steps below to access the Menu :



Press the Menu button. The password screen will appear:

NOTE : The default Password is 0000. Simply press the Enter button to access the Menu.

To key-in the Password, press the “Right” and “Left” buttons to move between numbers, and use the “Up” and “Down” buttons to key in the number.

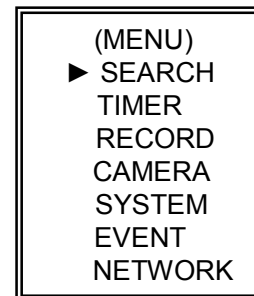
Press the ENTER button once the correct Password is entered. The MENU options screen will appear.

Note: If you get a message “Password Error”, you have entered an incorrect password.

MAIN MENU

There are 6 options available in the Main Menu:

SEARCH ----- Find recorded list
TIMER ----- Scheduling Record
RECORD ----- Record Mode Setup
CAMERA ----- Camera Channel Setup
SYSTEM ----- System Setup
EVENT ----- Event List
NETWROK----- Network Setup



Outlined below are the buttons used for Menu setting :

- **“Up” and “Down”** : Scroll up and down or change values when an option is selected and is blinking
- **“Left” and “Right”** : Scroll sideways within a menu option that has been selected
- **ENTER** : Selects a submenu / an option under a submenu for browsing / modification
- **MENU** : Completes modification of a menu option; exits a menu

MENU OPTIONS

SYSTEM

1. AUDIO INPUT

To choose one of 9 channels to record. (only can select 1 during operation for recording)

2. INT AUDIBLE ALARM

To set the INTERNAL AUDIBLE ALARM. It will be triggered by event occurrence when the setting is ON.

3. EXT AUDIBLE ALARM

To set the EXTERNAL AUDIBLE ALARM. It will be triggered by event occurrence when the setting is ON.

4. MOTION AUDIBLE ALARM

To set the MOTION AUDIBLE ALARM. It will be triggered by motion detection occurrence when the setting is ON.

5. ALARM DURATION

Set the reaction time which was determined by how long the alarm mode responded to a buzzer. Default setting is 10 sec. Options are 10 SEC, 15 SEC, 20 SEC, 30 SEC, 1MIN, 2MIN, 3 MIN, 5 MIN, 10 MIN, 15 MIN, 30 MIN, ALWAYS.

6. DWELL TIME

DWELL TIME is the time period that each channel sequentially shown on call monitor.

7. MESSAGE LATCH

To select whether the DVS messages will disappear after 10 sec or remain on screen. NO is the default setting which the messages will go away after 10 sec.

NOTE : Video loss, Alarm and Motion messages will be shown the same as Alarm Duration time.

8. TITLE DISPLAY

To set the title shown on monitor or not.

9. TIME DISPLAY

To set the time format on the DVS.

10. TIME

To set the correct time on the DVS.

(MENU)
SEARCH
TIMER
RECORD
CAMERA
▶ SYSTEM
EVENT
NETWORK

(SYSTEM)
▶ AUDIO INPUT : 1
INT AUDIBLE ALARM : ON
EXT AUDIBLE ALARM : ON
MOTION AUDIBLE ALARM : ON
ALARM DURATION : 10 SEC
DWELL TIME : 02 SEC
MESSAGE LATCH : NO
TITLE DISPLAY : ON
TIME DISPLAY : Y/M/D
2003-JAN-02(THU) 17:37:09
NEW PASSWORD : XXXX
CLEAR HDD : MASTER
SYSTEM RESET : NO

11. NEW PASSWORD : XXXX (Default password : 0000)

To set the new password.

12. CLEAR HDD

Delete all the contents of your HDD. When you choose "YES" on this option, you will be prompted with the question shown : Press "▶" to clear HDD or press "◀" to confirm not to clear HDD.

ALL DATA IN HDD
WILL BE CLEARED
ARE YOU SURE?
(◀ : NO ▶ : YES)

13. SYSTEM RESET

Reset all system settings to factory default settings.

SEARCH

Press "ENTER" to confirm SEARCH setup, and the screen will show the following options.

1. LAST RECORD

Play the last recorded piece of video.

2. FULL LIST

Show a listing of all recorded video on the HDD which is sorted by time.

D : Motion Record

M : Manual Record time

A : Alarm Record time

T : Timer Record time

M-HDD : Storage in Master HDD

3. ALARM LIST

Show a listing of all recorded video triggered by an Alarm.

NOTE : If there is no Alarm in the record, the screen will display "EMPTY".

4. MOTION LIST

Show a listing of all motion detection triggered.

5. TIME SEARCH

Find video recorded on a specific date that is entered.

(MENU)
▶ SEARCH
TIMER
RECORD
CAMERA
SYSTEM
EVENT
NETWORK

▶ M 2002-JAN-01 02:32:03 M-HDD
M 2002-JAN-03 01:02:03 M-HDD
A 2002-JAN-05 21:12:24 M-HDD
T 2002-JAN-12 12:57:38 M-HDD
D 2002-JAN-13 16:16:39 M-HDD
M 2002-JAN-15 23:55:23 M-HDD
T 2002-JAN-22 18:22:13 M-HDD
D 2002-JAN-25 12:52:03 M-HDD

◀ : PAGE UP ▶ : PAGE DOWN

▶ LAST RECORD
FULL LIST
ALARM LIST
MOTION LIST
TIME SEARCH

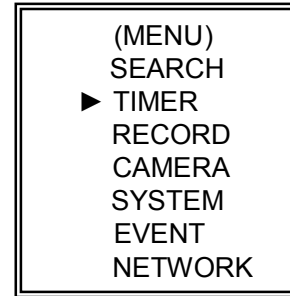
TIMER

1. DAY

Select the day, or days of the week (Mon–Fri / Sat-Sun / Daily) that you wish to schedule the DVS to automatically record.

NOTE :

1. Special Date could be changed by “Enter”, “Up” and “Down” buttons.
2. If you have selected the specific date and recording timer set from that specific day to a new day, then the Recording Timer Schedule will be set as whole week. For specific date of Recording Timer Schedule, it is not recommended to set End Time over 23:59. For Example: If you set Timer Schedule Day as Sunday, and START from 11:30, but End on 00:20, then Recording Timer Schedule is set as from every Sunday's 11:30 to next Sunday's 00:20. If you only want to set Recording Timer Schedule from every Sunday 11:30 to Monday 00:20, then you need to set Recording Timer Schedule as Sunday from 11:30 to 23:59, and Monday from 00:00 to 00:20.



2. START

Select the starting time for the recording.

3. END

Select the finishing time for the recording.

(TIMER)					
DAY	START	END	QUALITY	IPS	
DAILY	00:00	00:00	BEST	25A	
DAILY	00:00	00:00	BEST	25A	
DAILY	00:00	00:00	BEST	25A	
DAILY	00:00	00:00	BEST	25A	
DAILY	00:00	00:00	BEST	25A	
DAILY	00:00	00:00	BEST	25A	
DAILY	00:00	00:00	BEST	25A	
DAILY	00:00	00:00	BEST	25A	
TIMER ENABLE : NO					

4. QUALITY

Select the image quality for the recording. There are four Quality settings : **BEST, HIGH, NORMAL and BASIC.**

5. IPS

Stand for Images Per Second and it could show the Record submenu for more details.

NTSC — 25A 、 15 、 8 、 4 、 2 、 1

PAL — 18A 、 12 、 6 、 3 、 2 、 1

NOTE : “A” means “ Record with Audio”.

6. TIMER ENABLE

Enables / Disables Timer recording function

RECORD

1. HDD OVERWRITE

Select "YES" to overwrite previous recording video in HDD.

NOTE : When the HDD is full under O/W Recording mode, previous recorded files may be overwritten without further warning notices.

2. RECORD IPS

Select the images per second of recording. The options are as following :

NTSC — 25A 、 15 、 8 、 4 、 2 、 1

PAL — 18A 、 12 、 6 、 3 、 2 、 1

NOTE : "A" means "Record with Audio" .

3. RECORD QUALITY

There are four quality settings : BEST, HIGH, NORMAL and BASIC.

NOTE : The relationship of Record time, IPS and record quality, please refer to page.48 Recording Speed.

4. ALARM REC IPS

Select the images per second of recording during an Alarm. The options are as following :

NTSC — 25A 、 15 、 8 、 4 、 2 、 1

PAL — 18A 、 12 、 6 、 3 、 2 、 1

NOTE : "A" means " Record with Audio" .


5. ALARM REC QUALITY

There are four quality settings during an Alarm : BEST, HIGH, NORMAL and BASIC.


NOTE : The relationship of Record time, IPS and record quality, please refer to page.48 Recording Speed.

6. MOTION TRIGGER RECORD

When you set up the MOTION DETECTION function (Please refer to Page.13 for MOTION DETECTION SETUP),

1. Select "ON" to set up the motion trigger record: It can automatically switch from stand-by mode to Record Mode. The motion detection will change the scanning sequence and show  and "D" on the monitor.

NOTE: The trigger recording time will depend on ALARM DURATION mode setting (Please refer to page.9 for ALARM DURATION) and it will record from the last trigger time. For example, when the alarm duration setting is 1 min, the recording time is from 9:00:00 to 9:01:00. If the motion detection triggered again at 9:00:40, the triggered recording time will be from 9:00:00 to 9:00:40 and 9:00:40 to 9:01:40. The total recording time is 00:01:40.

2. Select "OFF": The screen shows , the motion detection will change the scanning sequence while in record mode and shows "M" on the monitor.

CAMERA

1. TITLE

Assign a title to each camera input. Initially each title is the camera's number.

2. DWELL

Select "ON" to set up the channel auto switching on the call monitor.

3. (Brightness) / (Contrast) / (Color)

Have a video adjustment (Brightness / Contrast / Color) of each channel. The level is from 0 to 9.

4. ALARM

Select LOW / OFF / HIGH for alarm polarity. The default value is LOW.

5. RECORD

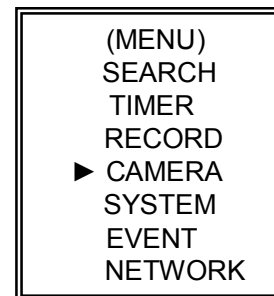
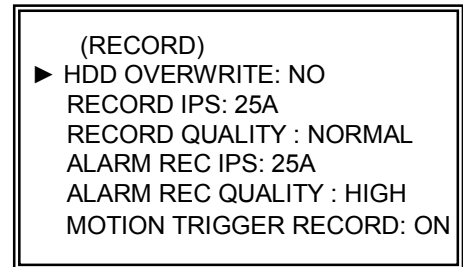
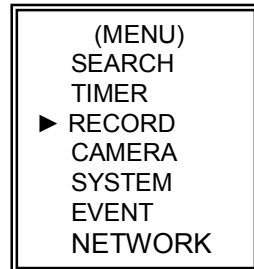
Set up which channel you want to record during alarm trigger. The DVS record methods are as below :

EVENT : when alarm input is triggered, DVS will record alarming channel more frequently.

For example : when CH01 is triggered, the record method will become 1-2-1-3-1-4....

NORMAL : when alarm input is triggered, DVS will record normally as set up.

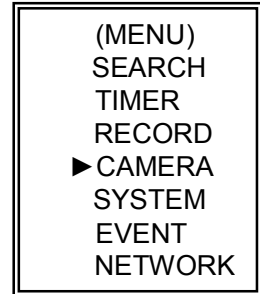
OFF : when alarm input is triggered, DVS will not record.



MOTION DETECTION

MOTION DETECTION SETUP

1. Press "MENU" to enter the menu set up, then "Down" to CAMERA setup.
2. Choose a channel and press "ENTER" twice to enter the Motion Detection Setup.



	TITLE	DWELL				ALARM	RECORD
▶	01	ON	5	5	5	LOW	EVENT
	02	ON	5	5	5	LOW	EVENT
	03	ON	5	5	5	LOW	EVENT
	04	ON	5	5	5	LOW	EVENT
	05	ON	5	5	5	LOW	EVENT
	06	ON	5	5	5	LOW	EVENT
	07	ON	5	5	5	LOW	EVENT
	08	ON	5	5	5	LOW	EVENT
	09	ON	5	5	5	LOW	EVENT

3. Each screen displays the current camera picture overlaid with the motion targets (as Figure 1).
You can push the button "Left" or "Right", "Up" or "Down" to adjust motion detection in ON or OFF.
4. The targets on each motion setup can be turned to ON or OFF individually. To set up targets, using the front panel buttons:
 - Press "ENTER" to confirm the channel
 - Press "ENTER" to enter motion mode
 - ▲ Up -- moves the target cursor up one row at a time.
 - ▼ Down -- moves the target cursor down one row at a time.
 - ◀ Left -- moves the target cursor left one column at a time.
 - ▶ Right -- moves the target cursor right one column at a time.
 - Press "ENTER" to turn the target cursor ON and press "ENTER" again to turn the target cursor OFF (Figure 1-1).
 - Zoom – turns all targets in the current row ON or OFF. (Figure 1-2)
 - PIP – turns all targets on the screen ON or OFF. (Figure 1-3)
5. Press "SLOW" button to setup the Sensitivity list up to 255 and "REC" button to setup the Sensitivity list down to 000.
The default value is set on 32.

NOTE : Sensitivity value is related to motion and brightness change. Low value (as 001) means higher sensitivity on motion and brightness change. High value (as 255) means lower sensitivity on motion and brightness change. User can choose the suitable sensitivity value in different locations.

NOTE : When motion trigger record setting is ON, it can automatically switch from stand-by mode to record mode. The motion detection will change the scanning sequence and show on the monitor. There will be an action as following:

For example : If the motion is detected on Camera #1, its recording & scanning sequence will be more frequently. The sequence will be as 1st, 2nd, 1st, 3rd, 1st, ... 9th. And channel 1 will show on the screen. If 2nd camera and 3rd camera both motion detection are activated, they will be scanning as 1st, 2nd, 3rd, 2nd, 2nd, 3rd, 3rd, 2nd, 3rd, 4th, 2nd, 3rd ... and vice versa. And CH2 & CH3 will show for a period of time which is same as Alarm Duration time.

Figure 1 MOTION DETECTION SETUP

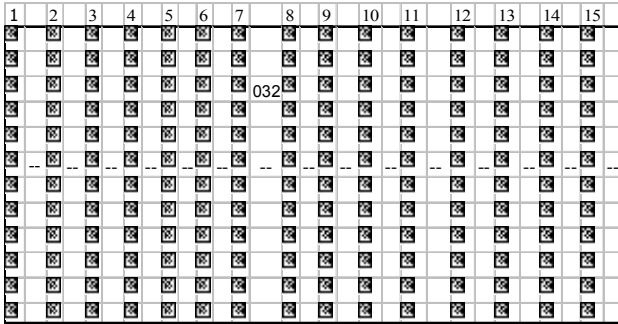


Figure 1-1 MOTION DETECTION SETUP — 1~15

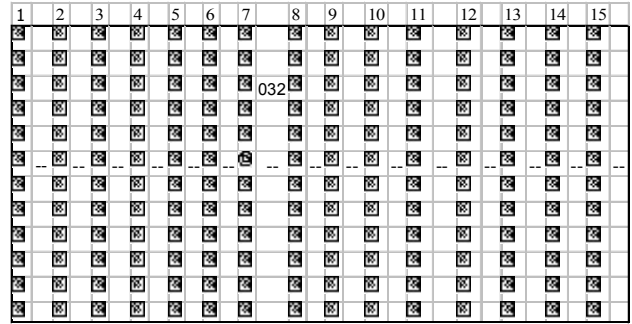


Figure 1-2 MOTION DETECTION SETUP-- LINE

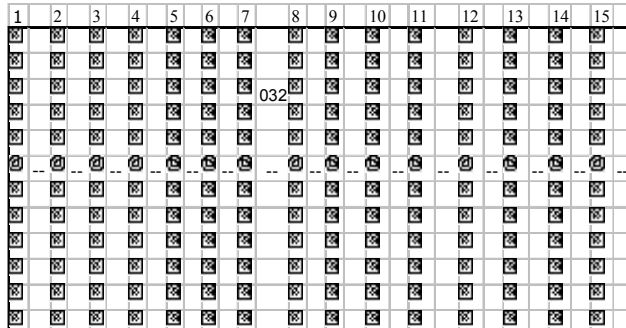
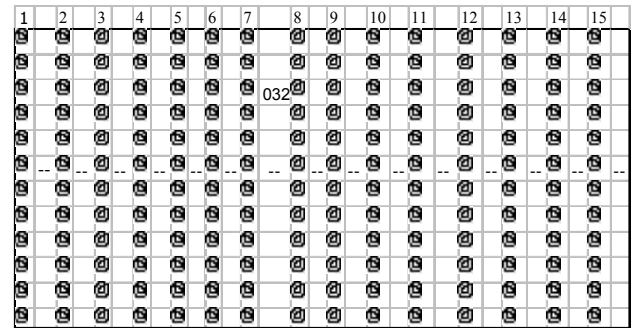


Figure 1-3 MOTION DETECTION SETUP-- ALL



EVENT

There are only 16 recorded events will be shown on a single page and please press “◀” or “▶” to change the pages or press ▲ + ▼ to CLEAR the EVENT record.

M-HDD WARNING: Master HDD might be failed.

M-HDD LOSS: Master HDD does not exist. Now user can use the other HDD.

M-HDD ERROR: Master HDD might be error

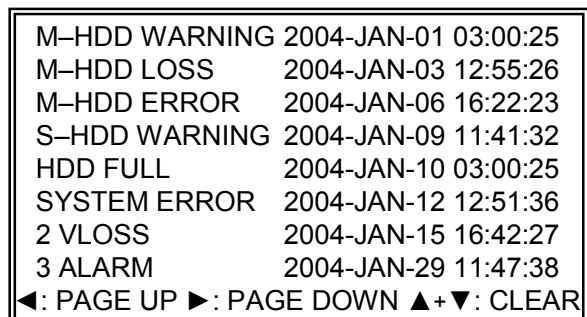
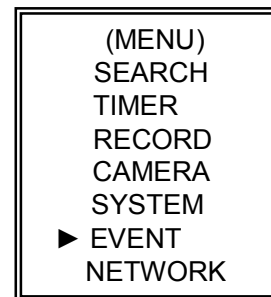
HDD FULL: HDD is full

SYSTEM ERROR: System might be failed

2 VLOSS: Channel: 2 Video loss

3 ALARM: Channel: 3 External I/O Alarm have triggered

POWER RESTORE : Power restore



NETWORK

Press the “▲” “▼” “◀” “▶” buttons to move the cursor.

Press the “+” “-” buttons to change the digit.

Press the “MENU” button to confirm the changes/ to exit the menu.

Set IP ADDRESS, NETMASK, GATEWAY, DNS and PORT.

Choose YES in LOAD DEFAULT will go back to default value of NETWORK

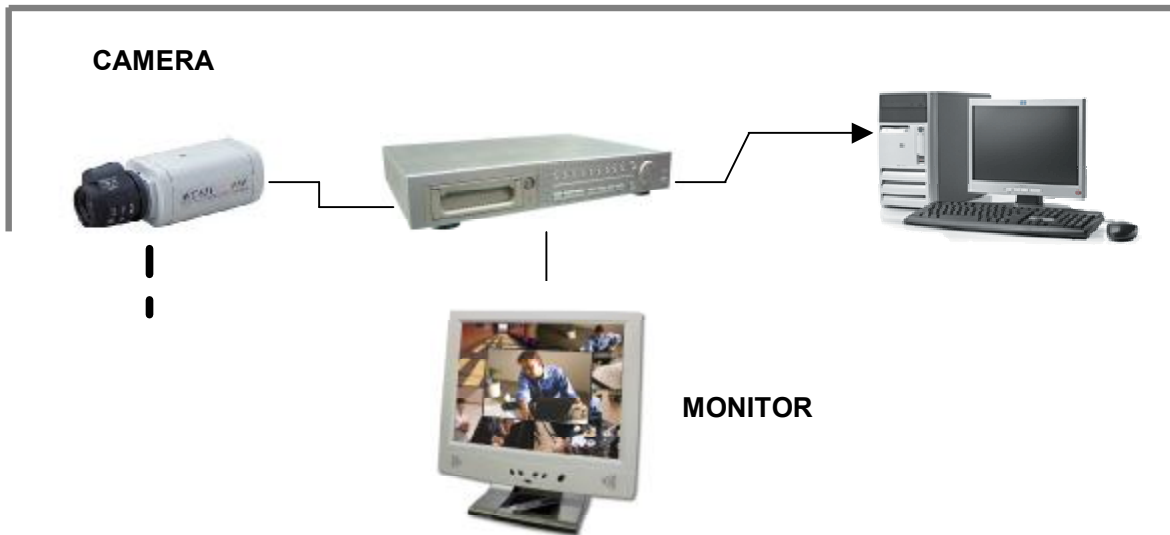
(MENU)
SEARCH
TIMER
RECORD
CAMERA
SYSTEM
EVENT
▶ NETWORK

(NETWORK)
SERVER IP 192.168.001.010
GATEWAY 192.168.001.065
NET MASK 255.255.255.000
DNS 168.095.001.001
WEB PORT 00080
RESET DEFAULT NO

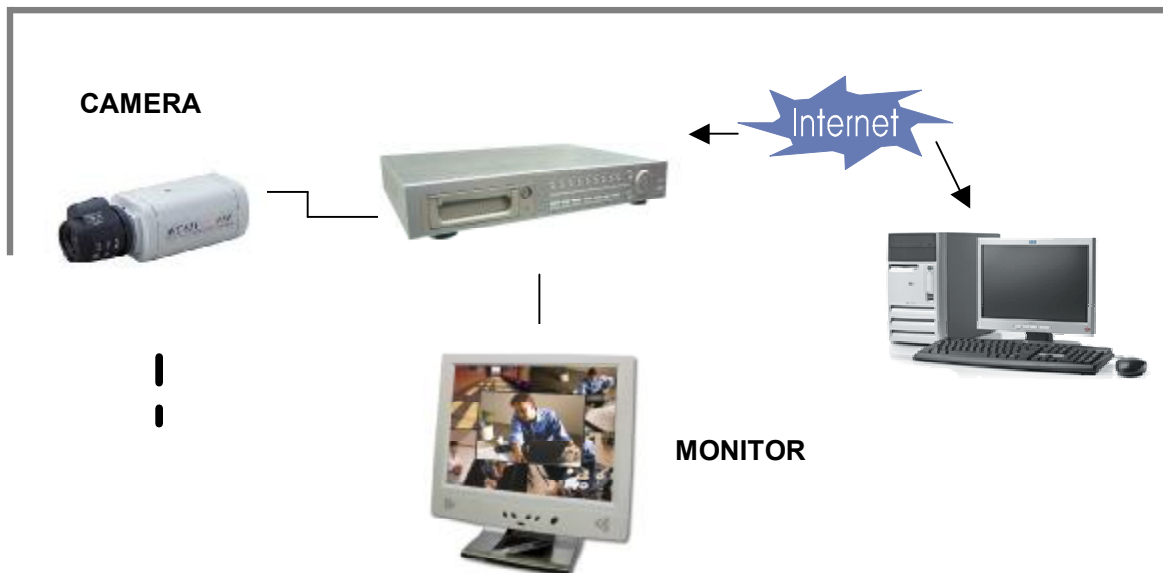
Network Setting Guide

HARDWARE CONNECTION

► Direct Connect with PC



► Remote Connect Via Internet



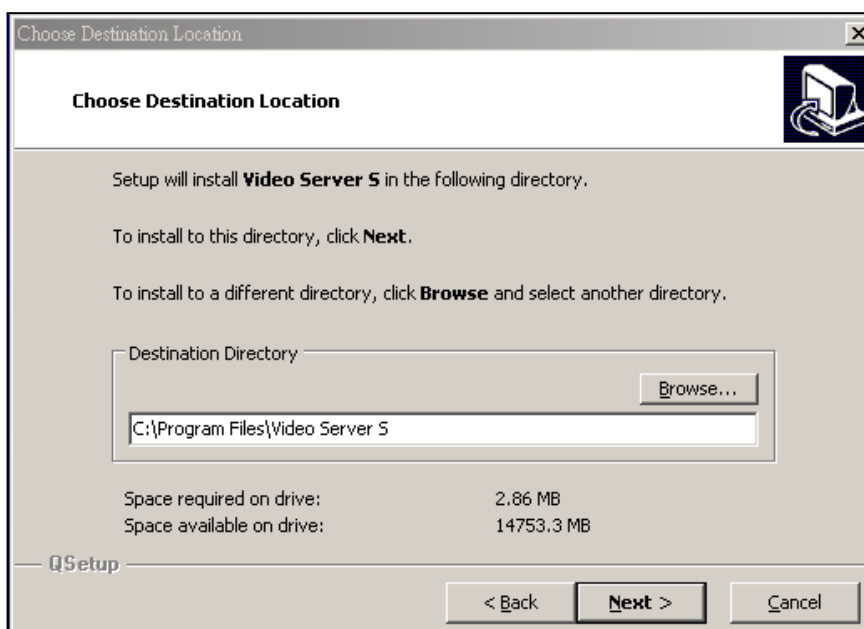
STATIC IP SETTING

STEP1: Software installation

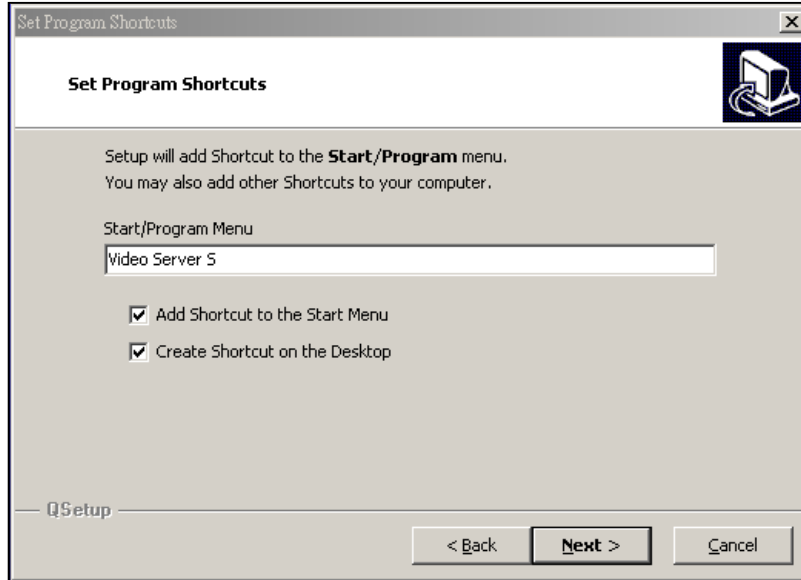
1. Put the attached CD into a CD-ROM and it will start to install the application program into PC.
2. Press "Next".



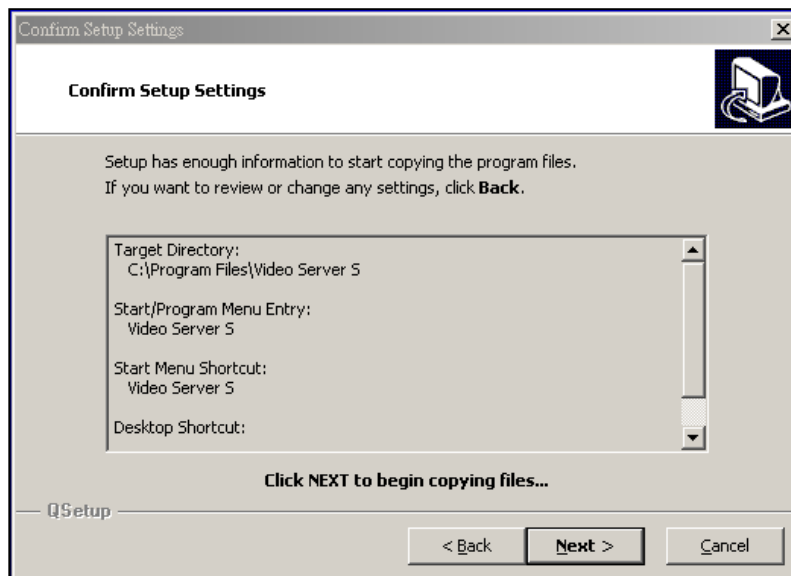
3. Choose destination location and press "Next".



4. Set program shortcuts setting and press “Next”.



5. Press “Next” to begin to copy files.

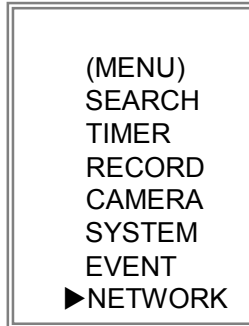


6. After the installation, there are 6 files and 1 folder in your assigned path (file folder) as below.

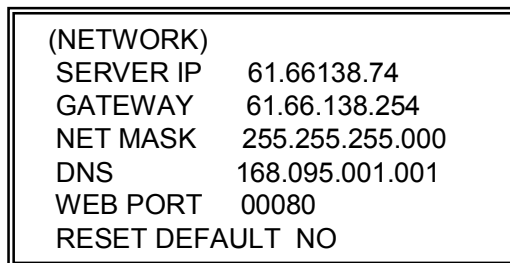


Step2 : Static IP setting

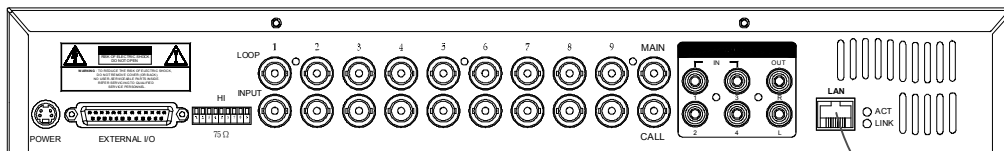
In DVS MENU / NETWORK set IP ADDRESS, GATEWAY, NET MASK, DNS and WEB PORT which are provided from your local ISP (internet service provider).



For example




After all network settings are finished, please connect DVS to the internet.



Static IP

Internet

Step3 : Connect PC and DVS via the internet

Click  twice and enter your User name, Password (Note : If you never change the “Account” before, the User Name and Password are both “admin”) and Server IP which you have set to DVS in step 2. Then click OK to connect.



The screenshot shows a dialog box titled "VIDEO WEB SERVER" with a blue header bar. It contains four input fields and a set of buttons at the bottom. The "User Name" field is filled with "admin". The "Password" field is filled with six asterisks. The "Server IP" field is filled with "61.66.138.74". The "Web Port" field is filled with "80". To the right of the "Web Port" field is a button labeled "Address Book" with a folder icon. At the bottom, there are four buttons: "OK", "SEARCH", "CANCEL", and a play button icon.

User Name :	admin	
Password :	*****	
Server IP :	61.66.138.74	
Web Port :	80	Address Book 

Buttons: OK, SEARCH, CANCEL, 

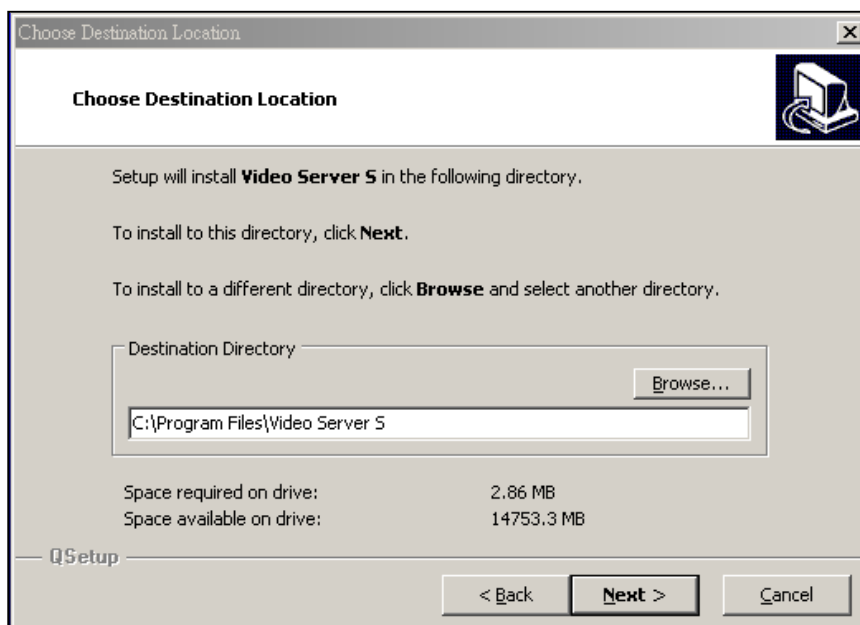
DYNAMIC IP SETTING

Step1 : Software installation

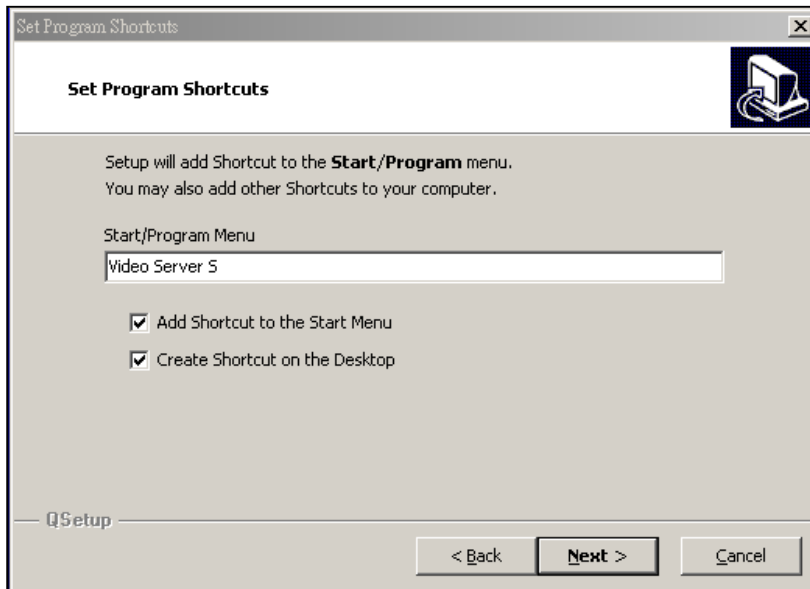
1. Put the CD into a CD-ROM and it will start to install the application program into PC.
2. Press "Next".



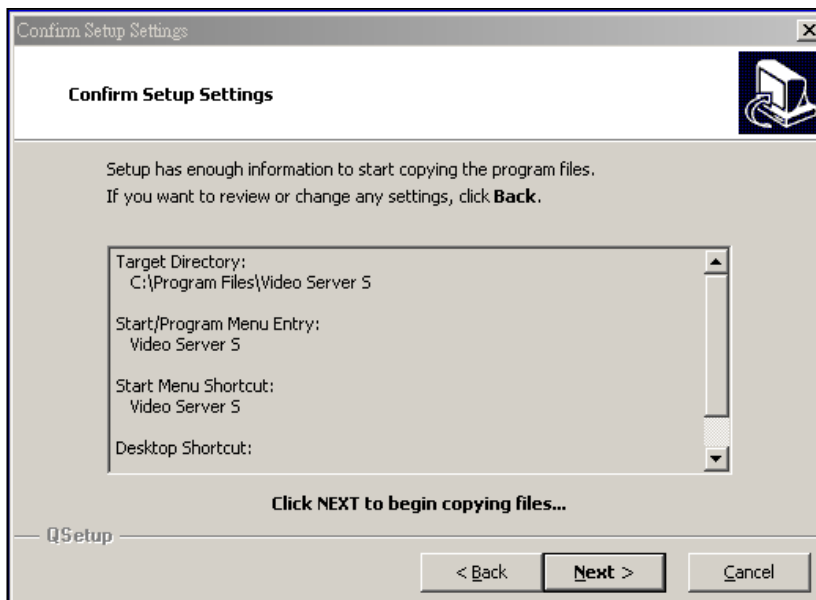
3. Choose destination location and press "Next".



4. Set program shortcuts setting and press “Next”.



5. Press “Next” to begin copying files

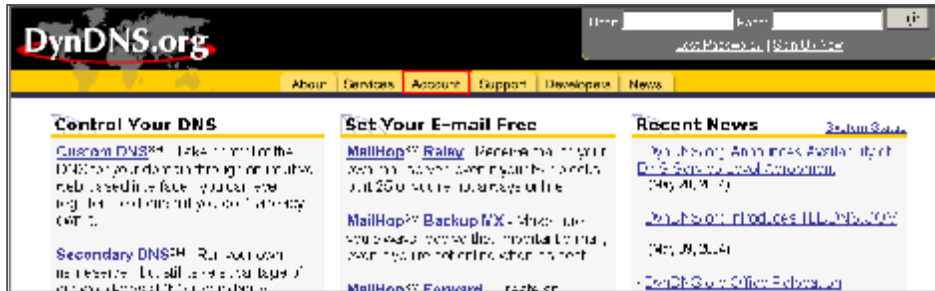


6. After the installation, there are 6 files and 1 folder in your assigned path (file folder) as below.



Step2 : DDNS apply

1. Click on free site "<http://www.dyndns.org>" (please look at the example below, you can also apply DDNS in other DDNS web page) and "ACCOUNT"



2. Press "Create Account"



3. Register the information and click on “Create Account”

DynDNS.org User: [] Pass: [] Login

Home | About | Services | Account | Support | Developers | News

Create Account

Please complete the form below to create your account. You will receive an e-mail containing instructions to activate your account. If you do not follow these directions within 48 hours, you will need to recreate your account.

It is strongly recommended that you visit this page [securely](#). You are not currently visiting this page securely.

Policy Last Modified: May 4, 2004

1. ACKNOWLEDGMENT AND ACCEPTANCE OF TERMS OF SERVICE

All services provided by Dynamic Network Services, Inc. ("DynDNS") are provided to you (the "Member") under the TERMS AND CONDITIONS set forth in this Acceptable Use Policy ("AUP") and any other operating rules and policies set forth by DynDNS. The AUP comprises:

I have read and agree to the Acceptable Use Policy above.

Username

Your username will be used to login to your account and make changes.

Username:

E-mail Address

The e-mail address you enter must be valid. Instructions to activate your account will be sent to the e-mail address provided. You must keep this address current and accounts with invalid e-mail addresses will be frozen with no warning. We do not sell our list to anyone. [Read more about our privacy policy.](#)

E-Mail Address:

Confirm E-Mail Address:

Password

The password you enter will be used to access your account. It must be more than 5 characters and cannot be your username.

Password:

Confirm Password:

4. After registering your account, you will receive an e-mail, which contains instructions to activate your account. If you do not follow these directions within 48 hours, you will need to re-register your account.

5. Login your account.

DynDNS.org User: [] Pass: [] Login

Home | About | Services | Account | Support | Developers | News

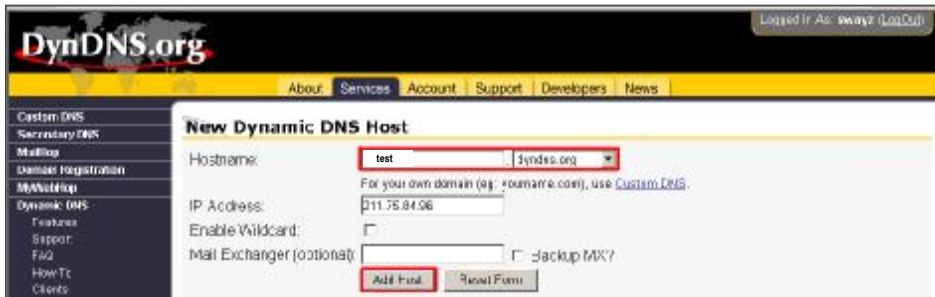
Username:

Password:

6. Click on "Account" and "Add Host"



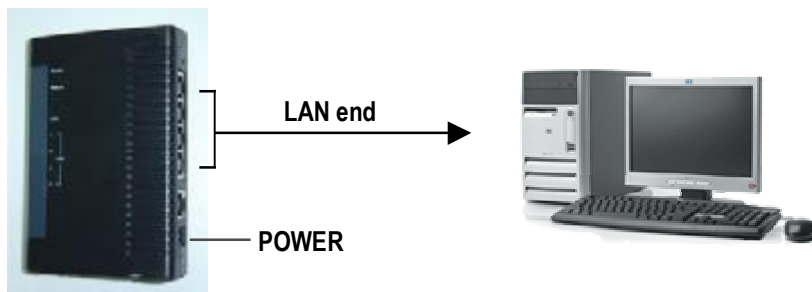
7 Users can set up their own DDNS HOST. For example, the user's applied Host name is "test.dyndns.org". And then press "Add Host" to finish the setting.
(NOTE : Some routers don't support some DDNS HOST)



Step3 : Login router

NOTE : The following settings are different from router to router. Please read the instruction of your router thoroughly.

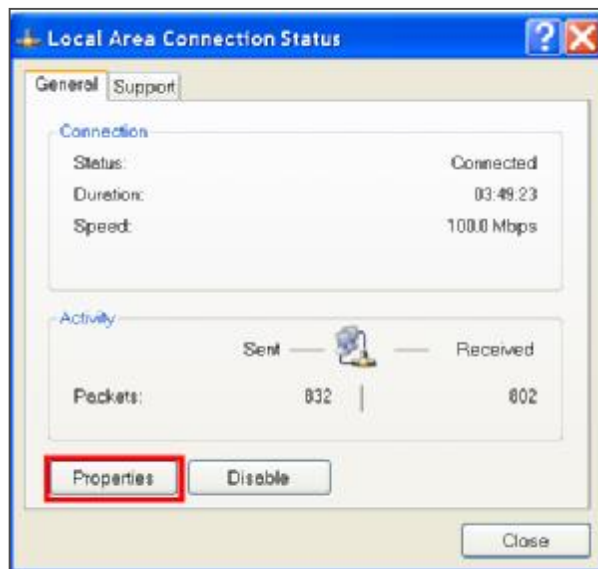
1. Connect PC and router (LAN end)



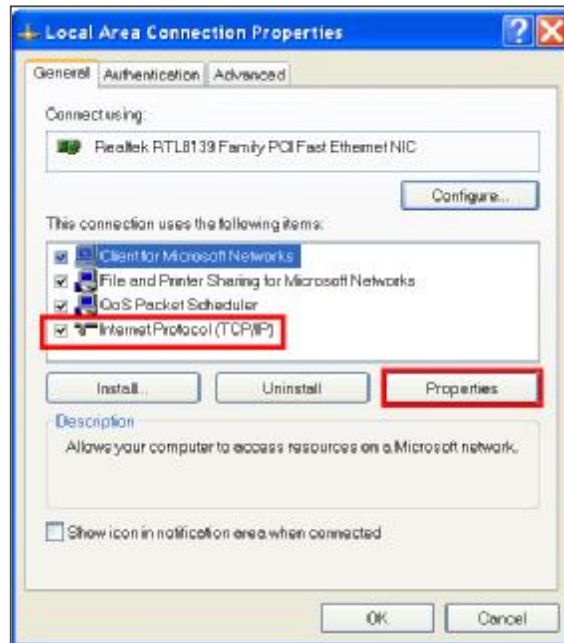
2. Network setting for PC. (The instruction is based on Win XP O/S. If your O/S is Win 2000 or Win 2003, the setup procedure is similar to that of Win XP O/S.)



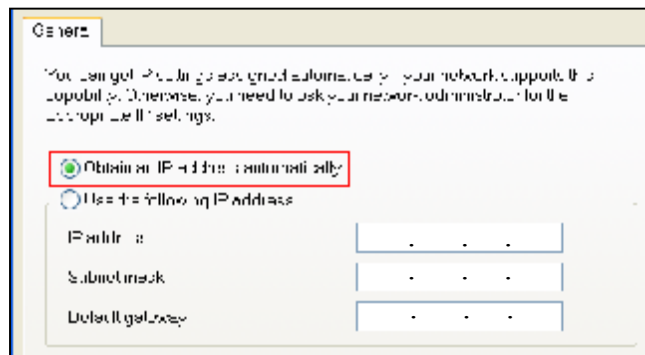
3. Click "Properties" for TCP/IP setup.



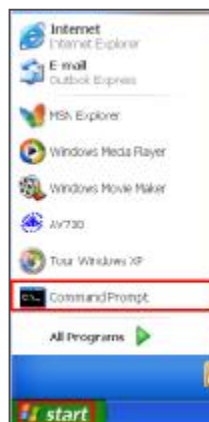
4. Click on “INTERNET PROTOCOL (TCP/IP)” and then select “Properties” to setup



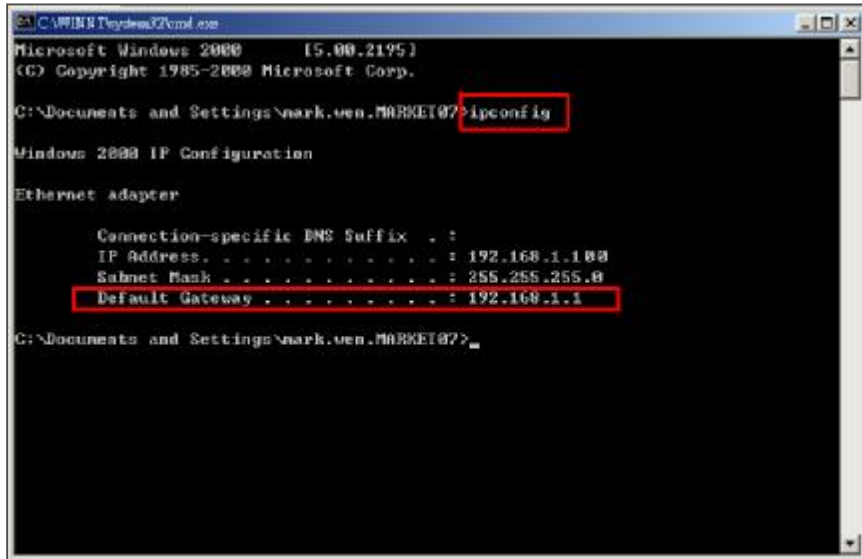
5. Choose “Obtain an IP address automatically”



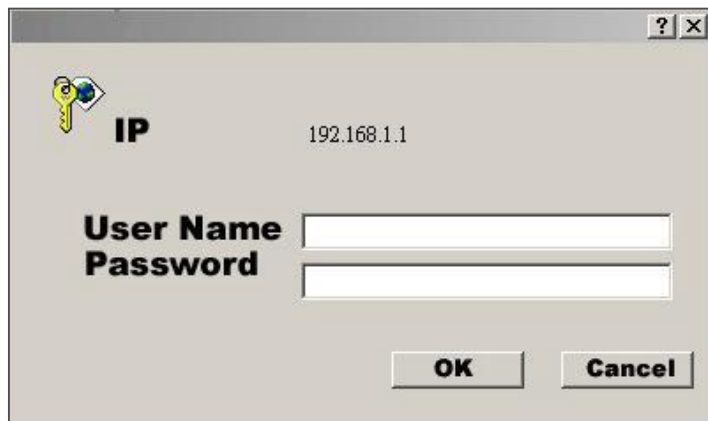
6. Enter “Command Prompt”



7. In the setting window, type “**ipconfig**” to find out router’s gateway(e.q. 192.168.1.1)



8. Close the window in the above step. Enter the IP address (router’s gateway : 192.168.1.1) to log in to the router from internet explore. And then enter the login web page and key in the router’s user name and password.



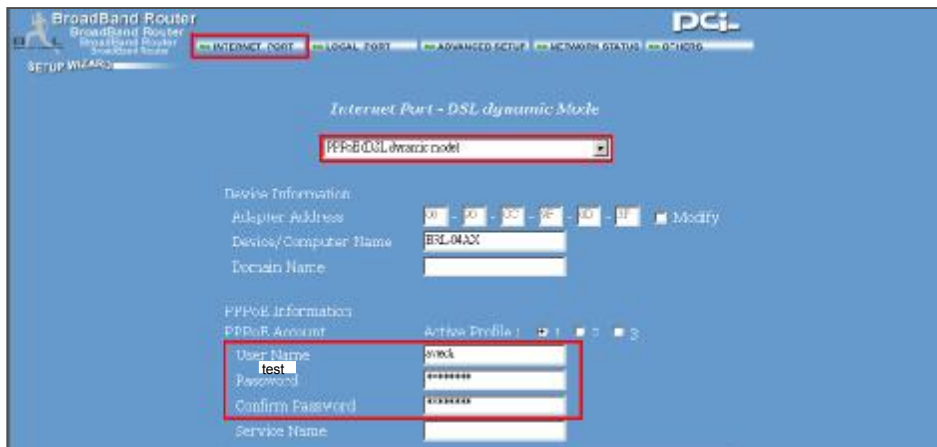
Step4 : Router setting

NOTE : In the router setting, we have four steps as follows.

1. Dial setting
2. DHCP setting
3. Virtual server setting
4. DDNS setting

(◇ The following settings will differ from router to router. Please refer to the user's manual of router)

1. Press "INTERNET PORT" and choose your WAN type (e.q. PPPoE), and then enter your "User Name" and "Password" of dialing up to dynamic IP. Press save after you finish the set up.



2. Press "LOCAL PORT" and set "Start IP address" and "Number of IP address". (For example, if the IP address of DVS is 192.168.1.10, then 10 is excluded from the setting range) Press save after you finish setting up.



- In **“ADVANCED SETUP / Virtual Server”**. Choose **“By Port”** and set **“Port Number”** to 80 for DVS. And set **“Local Server IP Address”** to 192.168.1.10. Press add after you finish the set up.



- In **“ADVANCED SETUP / Dynamic DNS”**. Key in the **“DNS Account”**, **“User Name”** and **“Password”** that you applied in step 3. Press **“save”** after you finish the set up.



Step 5 : IP setting

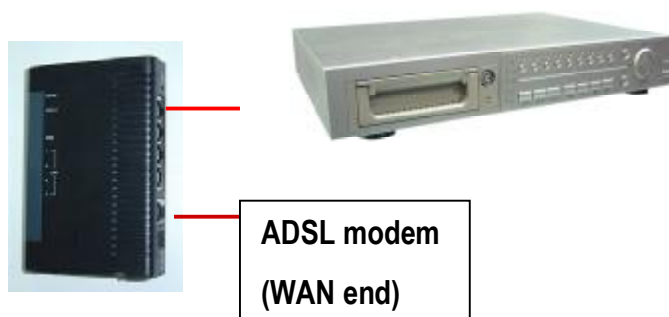
In DVS MENU / NETWORK set SERVER IP, GATEWAY, NET MASK, DNS and WEB PORT.

```
(MENU)
SEARCH
TIMER
RECORD
CAMERA
SYSTEM
EVENT
▶ NETWORK
```


For example

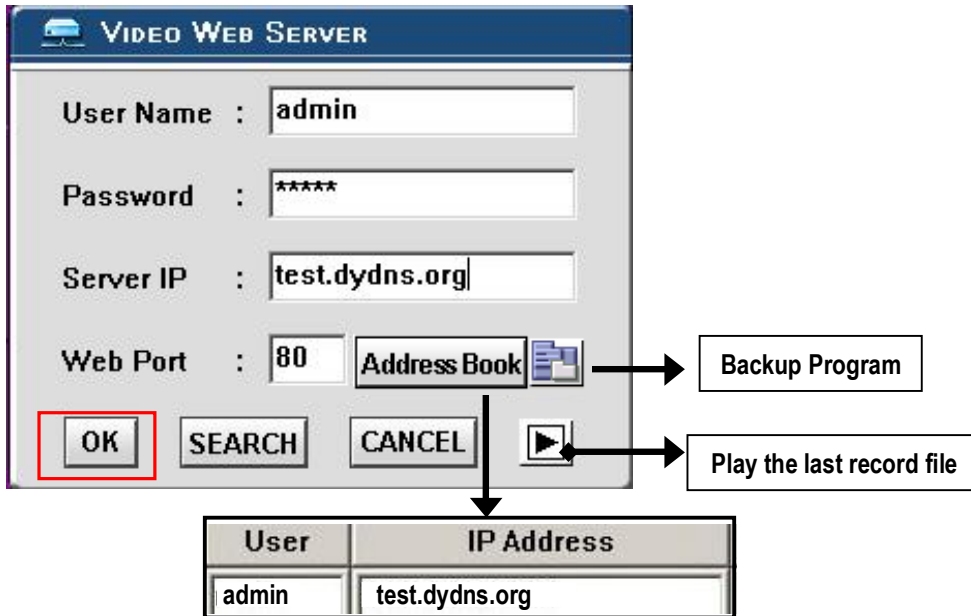
```
(NETWORK)
SERVER IP 192.168.001.010
GATEWAY 192.168.001.001
NET MASK 255.255.255.000
DNS      168.095.001.001
WEB PORT 00080
RESET DEFAULT NO
```

Step6 : Connect router



Step7 : Connect to DVS via internet

1. Change PC network setting to the original setting and link PC to the internet.
2. Click  twice and enter your User name, Password and host (Note : The default User Name and Password are both "admin"). Then click OK to connect.




NOTE:

There are two ways to get the software, one is via attached CD, and the other is via Video Web Server.(Refer to P.40~41)


❖Address Book

You can press "Address Book" button to add a new IP or choose any logined IP address to access the Video Server. This function is designed to store the list of IP addresses which you can control and manage.

❖Backup Program

You can press " " button and you can backup all related files of this application program to any storage device that you want (for example: any hard disk or USB Flash Drive).

❖Play last record file


You can press " " button and you can play the last record file.

Note of Dynamic IP setting

- *In step 2.7 : Some routers don't support some DDNS HOST.
- *In step 3.1 : Please use router's LAN end to connect PC.
- *In step 3.8 : Please use IE browser to enter router's gateway.
- *In step 4.1 : Please make sure that you have pressed save after setting.
- *In step 4.2 : Please make sure that you have pressed save after setting.
- *In step 4.3 : Please make sure that you have pressed add after setting.
- *In step 4.4 : Please make sure that you have pressed save after setting.
- *In step 6 : Please use router's LAN end to connect to DVS. Use WAN end to connect to ADSL modem.
- *In step 7 : The Server IP is the DDNS HOST which you set in step 4.4.

SOFTWARE OPERATION

Follow the steps for connection at your client site (remote site). (e.g. If you set up the server at your office with one static ADSL, you can remotely proceed to watch the video anywhere with a networked computer.)

Step 1 : Click  twice to enter Login setup (please refer to page 21 “software installation”)

Step 2 : Key in “User Name” and “Password”. Click “OK” to establish the connection.

For example

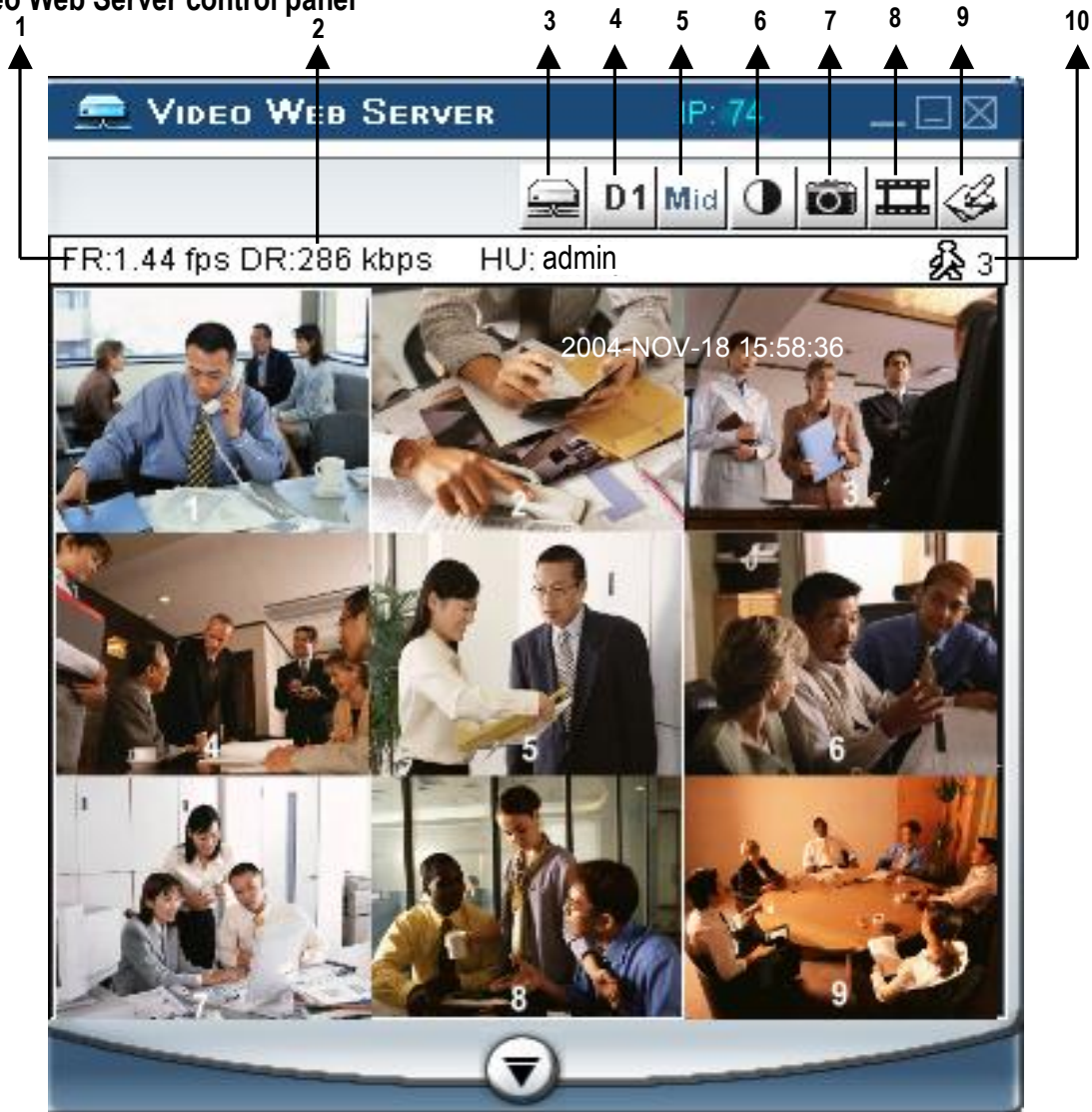


Step 3 : If you could see the video screen as following, you have been successfully connecting to the server.



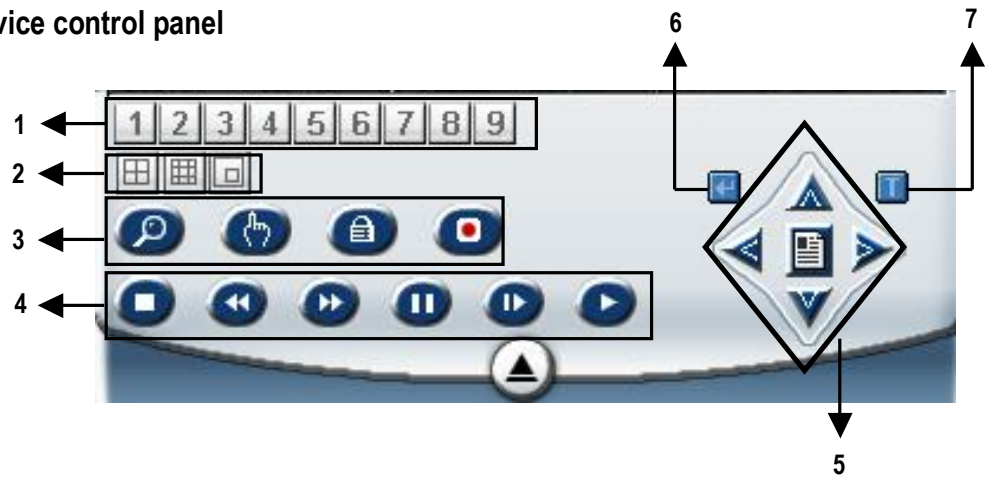
BASIC SOFTWARE OPERATION

A. Video Web Server control panel



1. Image transmission rate per second
2. Data transmission rate
3. Connection/Disconnection
4. Resolution : D1 、 CIF
5. Image quality : High 、 Middle 、 Low
6. Image adjusting : Brightness/ Contrast/ Saturation
7. Snapshot : press this button, the image will be automatically saved in the PC.
8. Record : press this button, the recording file will be saved in the PC automatically.
9. System Config
10. Number of online users

B. Digital device control panel



1. CH1-9
2. 4cut, 7cut, 9cut, PIP
3. Zoom, Select, Lock, Record
4. Stop, Rewind, Fast Forward , Pause, Slow, Play
5. Menu(Exit), Left, Right, Up, Down
6. Enter
7. TURBO*

***TURBO:**

Activate the turbo button when you would like to shift the selection more quickly by jumping 6 selections at a time.

►NOTE :

After you press the record icon, there will be a recording file in the path that you have set. Each recording file can save up to 6000 frames. The recording file will be assigned to the second file if it is more than 6000 frames. Besides, if the HDD space is less than 200MB, the program will stop recording.

PLAYBACK OPERATION

Please find a recording file in the PC and click twice on it to playback.



- | | |
|--|---|
| 1. On Screen Display | 8. OSD show / hide |
| 2. Snapshot | 9. System setting (Path of snapshot, text color, progress color, channel color) |
| 3. Stop | 10. Last Video |
| 4. Pause | 11. Next Video |
| 5. Slow (1/2X, 1/4X, 1/8X, 1/16X, 1/32X) | 12. Duration time / Status |
| 6. PLAY | 13. Playback controlling bar |
| 7. Fast (2X, 4X, 8X, 16X, 32X) | |

ADVANCED SETTING

Click "System Config" for advanced setting.



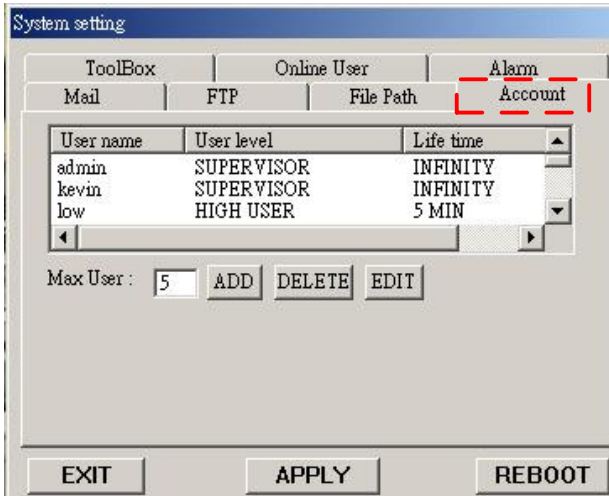
SYSTEM CONFIG

NOTE :

Apply--
After changing all setting, press "apply" to refresh the data.

Reboot--
Press this button to restart setting.

ACCOUNT



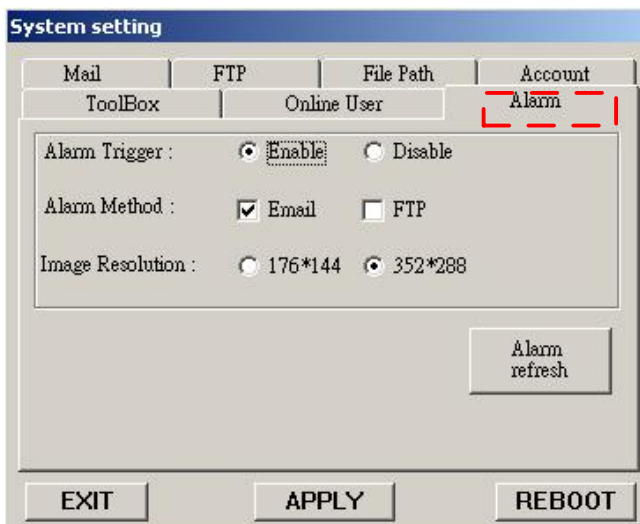
Set up the user's account(Max 10 accounts) , password and authority (Max 5 accounts on line at the same time) .

1. User's level:

- SUPERVISOR**-control all the functions
- HIGH LEVEL**-control advanced functions
- NORMAL** -control basic functions only
- GUEST LEVEL** -watch the image only

2. Life time : During the period of time, users are allowed to control the Video Web Server.

ALARM



Set up the ALARM function. You can use it to operate "alarm trigger recording" function.

- 1. Alarm Trigger:** Enable or disable Alarm trigger function.
- 2. Alarm Method :** Two selections—E-mail or FTP.
- 3. Image Resolution :** Image storing resolution for Email or FTP function(CIF is 176 *144; D1 is 352*288)
- 4. Alarm refresh :** Clean the alarm message "🔔" which is showed on the screen.

* When the motion detection is triggered, the DVS will send the alarmed image to notify the users.

MAIL

When the alarm is triggered, the video server program will capture the instant picture and e-mail the captured image to the assigned recipients.

1. Get all the data from the ISP company or by mailing to the server supplier. (POP3/SMTP server)
2. Set the mail list which you want to send to when the alarm is triggered.
3. If it is not necessary for you to verify password and user's name, please choose Verify as "No".

FTP

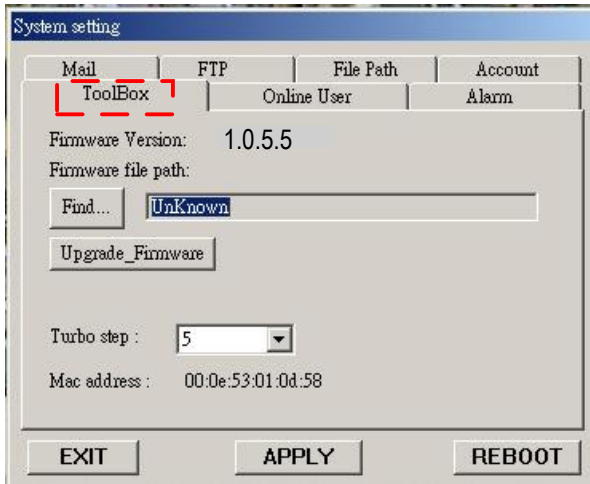
When the alarm is triggered, the video server program will capture the instant picture and upload the captured image to the assigned FTP site.

1. Get all the data from ISP company..
2. The default uploading port is No.21.
3. Set the uploading directory.

File Path

Modify the storing path for recording file and snapshot images by yourself.

TOOLBOX



Upgrade the firmware and get the online users' information.

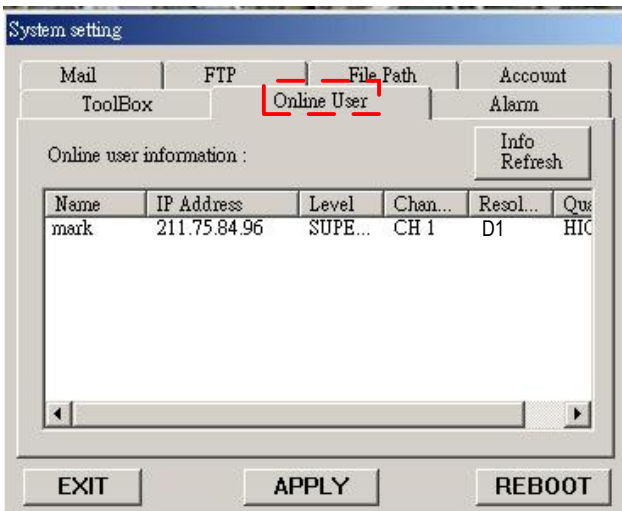
NOTE :

Do not reboot the DVS while it is upgrading the firmware.

1.Firmware Version : The current firmware version. You can click on "Find" button to get the latest firmware from PC and press "Upgrade Firmware" to upgrade it.

2.Turbo Step: Activate the turbo button when you would like to shift the selection more quickly by jumping 6 selections at a time.

Online User



The information of online user.

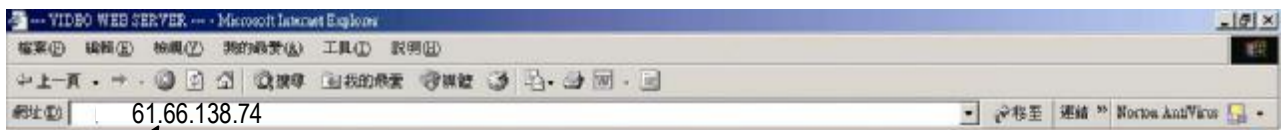
Info Refresh:

It can refresh the users' information.

CONNECT via IE BROWSER

You can also connect Video Web Server via browser. This function is suitable in both WIN 2000 and WIN XP (WIN XP is preferable to WIN 2000)

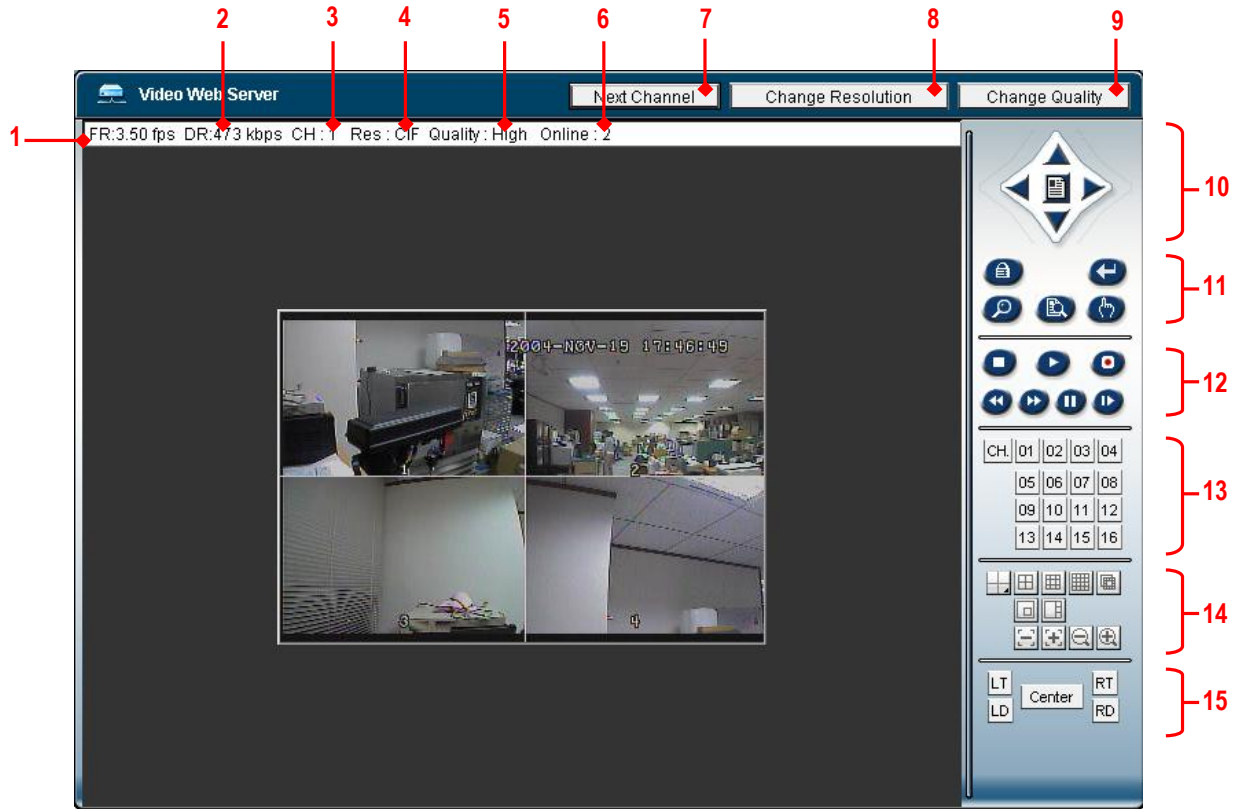
Step 1 : Enter IP address that you want to connect.(example)



Step 2 : Enter your Username and Password to login Video Web Server.



Step 3 : After you login, you will see as below. (example)



- 1. Image transmission rate per second
- 2. Data transmission rate
- 3. Video Channel
- 4. Resolution :D1 、 CIF
- 5. Image quality : High 、 Middle 、 Low
- 6. Number of online users
- 7. Channel switching button
- 8. Resolution switching button



- 9. Quality switching button
- 10. Menu, Left, Right, Up, Down, Exit
- 11. Lock, Enter, Zoom, Search, Select.
- 12. Stop, Play, Record, Rew, Fast, Pause, Slow,
- 13. Camera
- 14. 4cut, 7cut, 9cut, PIP
- 15. Position of view

Advanced Operation

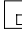
OPERATION OPTIONS

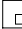
SELECT

This device allows user to get the ideal view size.

- Press  ,  button to make different view size.
- Press "Select" then "Left" or "Right" button to locate the desired position.
- Press "Camera Select (1-9)" to select the appointed camera.
- Press "Menu" to exit.

PICTURE IN PICTURE (PIP)

Press PIP  button to enter PIP display screen. The PIP format displays a full screen "background" picture with a 1/9 size screen "insert".

- Press  button to move the insert screen.
- Press "Select" button to confirm the camera selection.
- Press "Left" or "Right" to choose background or insert screen.
- Press camera select (1-9) to select appointed camera into screen.
- Press "Menu" to exit.

ZOOM

Press ZOOM button to enlarge the display of main picture. It displays zoomed picture on main picture and a small window inserted. The inserted window contains a movable 1/4 view size of the appointed camera.

- Press the appointed "Camera Select (1-9)".
- Press "Zoom" button to select zoom mode.
- Press the "Zoom" button again to move the zoom pointer.
- Press "Menu" to exit.

VIDEO LOSS

Screen will display  if the video input is not connected properly.

KEY LOCK

For further security, you can "Lock" all buttons on your DVS. Locking disables the buttons and prevents other people from using the system.

Press ENTER and MENU at the same time to enable Key Lock.

Press ENTER and MENU at the same time and key in password (Default : 0000), then press "ENTER" to disable Key Lock.

TROUBLE SHOOTING

When malfunction occurs with DVS, it may be not serious and can be corrected easily. The table below describes some typical problems and their solutions. Please check them before calling your DVS dealer.

PROBLEM	SOLUTION
HDD Not Found	<ul style="list-style-type: none"> ● Please Insert HDD ● Please use the Key to lock the HDD Cartridge <p style="margin-left: 20px;">And press any key</p>
No power	<ul style="list-style-type: none"> ● Check power cord connections. ● Confirm that there is power at the outlet.
Not working when press any button	<ul style="list-style-type: none"> ● Check if it is under Key Lock mode. ● Press "MENU" & "ENTER" to exist Key Lock mode.
No recorded video	<ul style="list-style-type: none"> ● Check if the HDD is installed properly.
Timer Record enable does not working	<ul style="list-style-type: none"> ● Check if the Record Enable is set to YES
No live video	<ul style="list-style-type: none"> ● Check camera video cable and connections. ● Check monitor video cable and connections. ● Confirm that the camera has power. ● Check camera lens setting.

SPECIFICATION

Video format	NTSC/EIA or PAL/CCIR
Network Interface	Ethernet (10/100 Base-T)
Protocols	TCPIP, ICMP, SMTP, HTTP, FTP
Triggers &Action	Email images or images uploading to FTP site's specific account / Remote Recording
Hard disk storage	IDE type, UDMA 66, support over 250 GB HDD
Record mode	Manual / Alarm / Timer / Motion Trigger
Camera Input Signal	Composite video signal 1 Vp-p 75Ω BNC, 9 channels
Camera Loop Back	Composite video signal 1 Vp-p 75Ω BNC, 9 channels
Main Monitor Output	Composite video signal 1 Vp-p 75Ω BNC
Call Monitor Output	Composite video signal 1 Vp-p 75Ω BNC
Audio input	4 audio inputs, (RCA) *
Audio output	2 audio outputs, (RCA) **
Motion Detect Area	15 * 12 targets per camera (NTSC) / 15 * 14 targets per camera (PAL)
Motion Detect Sensitivity	256 Levels
Video Loss Detection	Yes
Refresh Rate	Up to 120 images/sec. for NTSC / 100 images/sec. for PAL
Recording Rate	Up to 25 images/sec. for NTSC / 18 images/sec. for PAL
Dwell Time	Programmable (1~10 Sec)
Picture in Picture	Yes (Movable)
Key Lock	Yes
Picture Zoom	2*2 (Movable)
Camera Title	6 letters
Video Adjustable	Color/ Contrast/ Brightness Adjustable
Alarm Input	TTL input, Hi (5V), Low (GND)
Alarm Output	COM,/N.O
Time Display Format	YY/MM/DD, DD/MM/YY, MM/DD/YY, OFF
Power Source	AC100~240V ± 10% switching adaptor
Power Consumption	<32W
Operation Temperature	10 ~ 40°C
Dimension (mm)	430(W) x 65(H) x 300(L)
Net Weight	5.4kg

► Specifications are subject to change without notice.

* 4 audio inputs, but only can select 1 during operation for recording

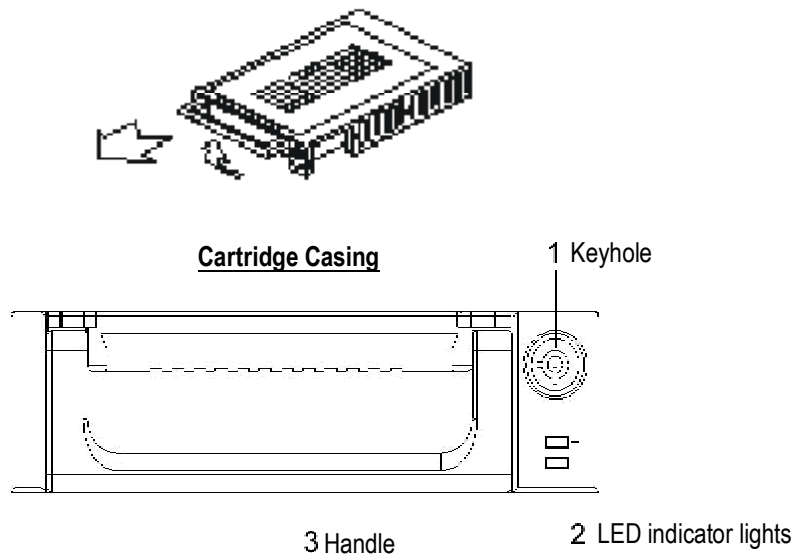
** with 2 mono audio outputs from the same source.

APPENDIX #1 – INSTALL THE HDD

Please follow the next steps carefully in order to ensure correct installation.

The compartment located on the front panel of the DVS is the removable Cartridge Casing in which you insert the HDD. The various parts of the Cartridge Casing are labeled for your reference.

1. Remove the Cartridge Casing from the DVS



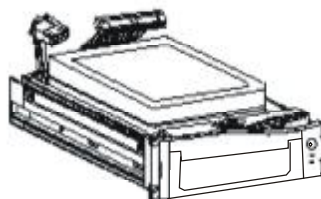
2. Remove the Cover from the Cartridge Casing

- Unclip the release latch with the word "OPEN" printed beside it by gently pushing on the latch.
- Slide the cover off the Cartridge Casing.



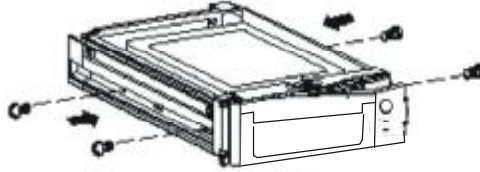
3. Connect the HDD into the Cartridge Casing

Please take the Hard Disk Drive and Connect the two cables from the back of the Cartridge Casing to the HDD.



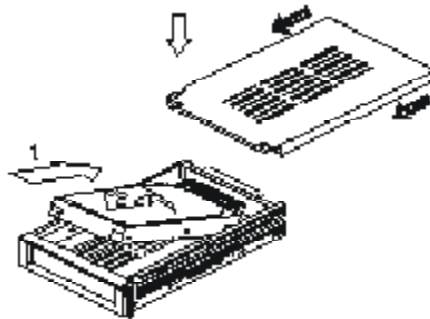
4. Secure the HDD in the Casing (optional)

Use the supplied screws and tighten them, positioning the HDD into place.



5. Slide the top Cover over the Cartridge Casing

Slide the Cover forward over the Cartridge Case. Ensure it is secured in place over the release latch.

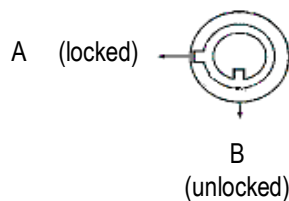


6. Reinsert the Cartridge Casing into the DVS

Fully insert the Cartridge Case into the DVS.

7. Lock the Cabinet

Lock the cabinet by turning the key clockwise.

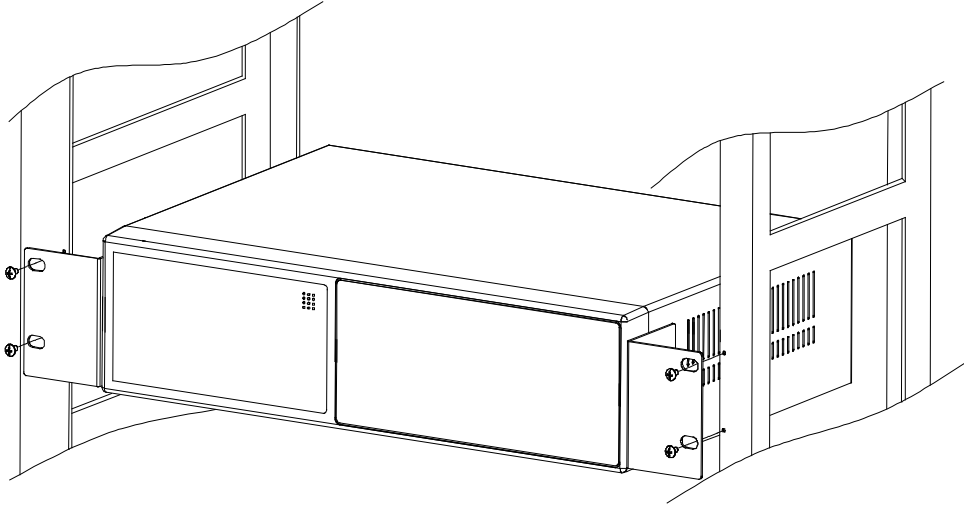


Note : If you do not lock the cabinet, the DVS system will not function properly.

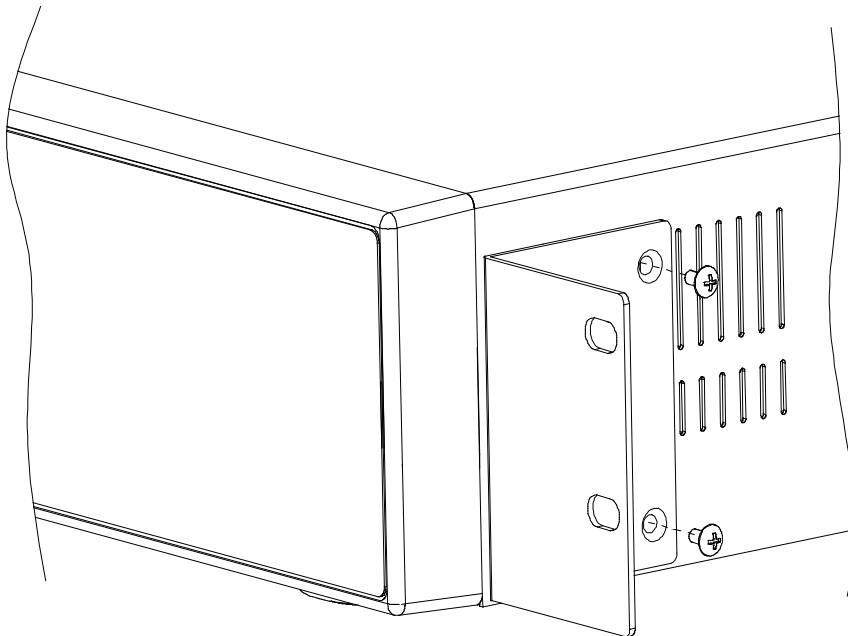
1. If two HDDs are set up, it should be selected as " Master ".
2. This product does not support hot swap. Please power off the unit before removing HDD.
3. Approved models and manufactures of HDD listed in page.2 have been tested and proven compatible with this appliance.
4. Please remove hard disk drive ONLY after power was shut off for more than 60 seconds. This would protect and extend the operating life of the hard disk drive.
5. HDD should be set up by selecting HDD Jumper.

APPENDIX #2 – RACK MOUNT

Screws and brackets for rack mounting applications can be purchased as an optional accessory.



Front Angle with Rack Mount



Side View with Rack Mount

APPENDIX #3 – RECORDING SPEED

The Recording Time is different based on Recording Speed and Recording Quality. Please refer to following table.

▶NTSC SYSTEM

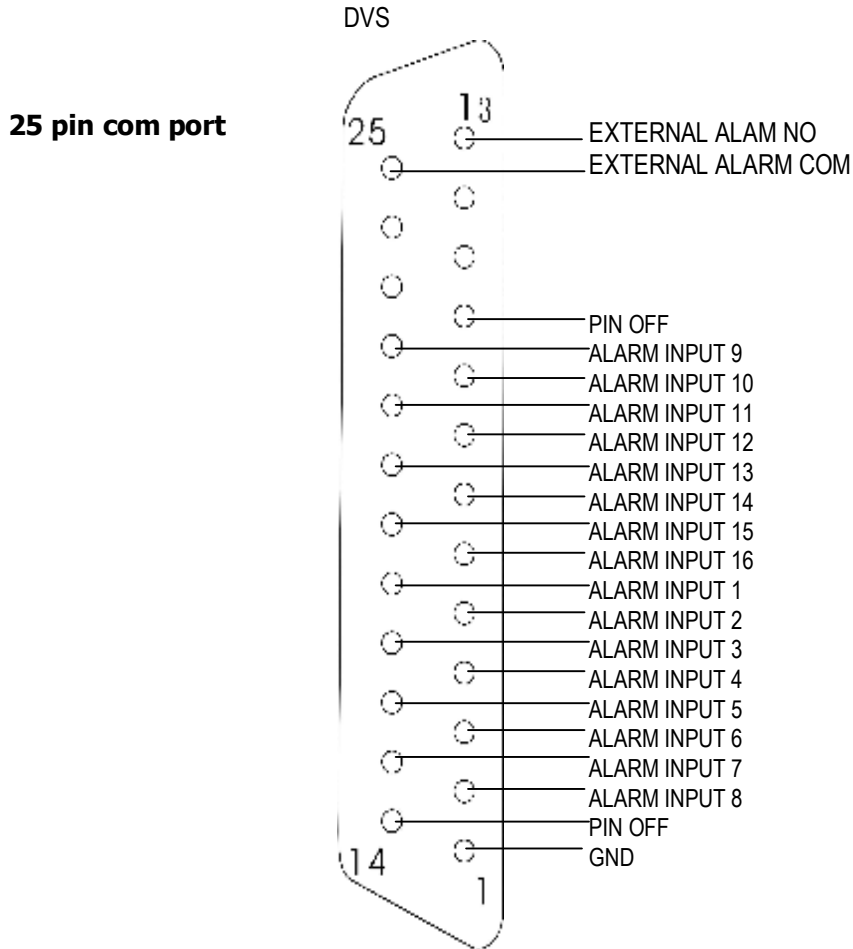
IPS		25A	15	8	4	2	1
Record Quality	Best	48hr	96hr	180hr	360hr	720hr	1440hr
	High	60hr	120hr	226hr	450hr	900hr	1800hr
	Normal	96hr	192hr	360hr	720hr	1440hr	2880hr
	Basic	160hr	320hr	600hr	1200hr	2400hr	4800hr
HDD Type		120GB X 2)					

▶PAL SYSTEM

IPS		18A	12	6	3	2	1
Record Quality	Best	48hr	100hr	202hr	406hr	608hr	1216hr
	High	60hr	126hr	254hr	506hr	760hr	1520hr
	Normal	98hr	202hr	406hr	810hr	1216hr	2440hr
	Basic	162hr	336hr	676hr	1350hr	2026hr	4050hr
HDD Type		120GB X 2)					

Note: Above data is from actual test data obtained from recording normal TV program. (Reference only)

APPENDIX #4 – PIN CONFIGURATIONS



GND	GROUND	PIN 1
ALARM INPUT	To connect wire from ALARM INPUT (PIN 2 -- 9 ; PIN 15-22) to GND (PIN 1) connector, DVS will start recording and buzzer will be on. ➤ When Menu/ Camera/ Alarm is set up to "Low" : When alarm input signal is " Low ", the unit starts to record and buzzer. ➤ When Menu/ Camera/ Alarm is set up to "High" : When alarm input signal is " High ", the unit starts to record and buzzer.	PIN2-9; PIN 15-22
PIN OFF	----	PIN10,14
EXTERNAL ALARM NO	Under normal operation COM disconnect with NO. But when Alarm triggered, COM connect with NO.	PIN13
EXTERNAL ALARM COM	Under normal operation COM disconnect with NO. But when Alarm triggered, COM connect with NO.	PIN 25